

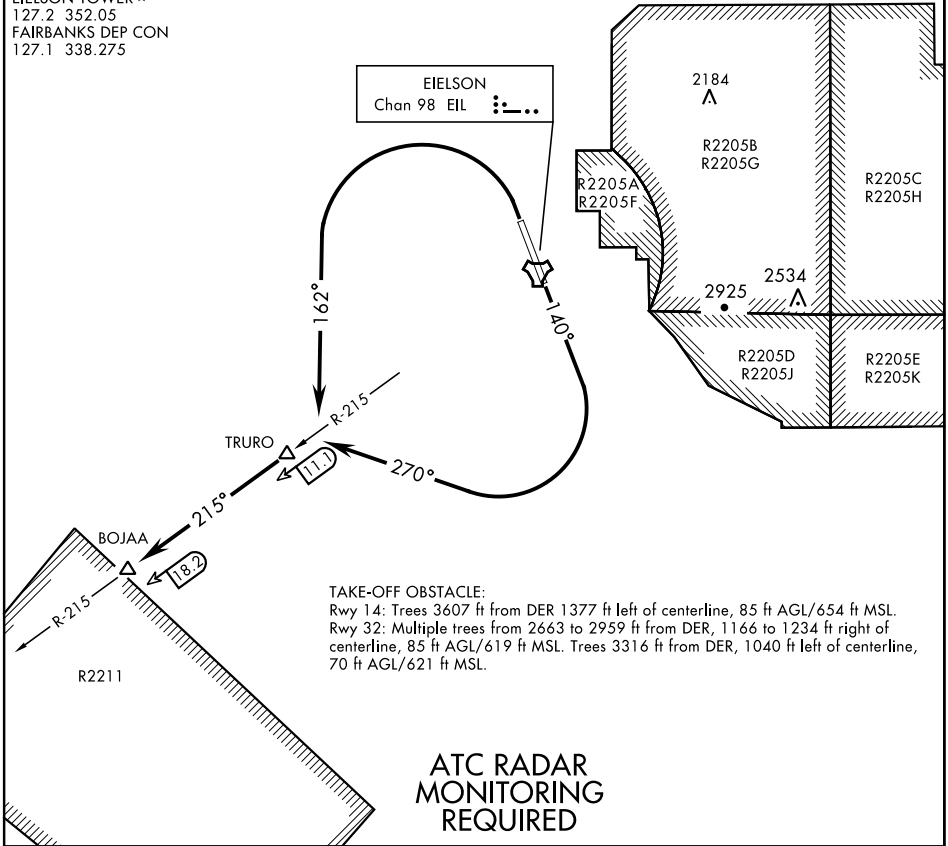
BOJAA TWO DEPARTURE (BOJAA2•BOJAA)

EIELSON AFB (PAEI)
FAIRBANKS, ALASKA

SL-1729 [USAF]

ATIS ★ 119.9 273.5
CLNC DEL
343.7
GND CON
121.8 275.8
EIELSON TOWER ★
127.2 352.05
FAIRBANKS DEP CON
127.1 338.275

EIELSON
Chan 98 EIL



TAKE-OFF OBSTACLE:

Rwy 14: Trees 3607 ft from DER 1377 ft left of centerline, 85 ft AGL/654 ft MSL.
Rwy 32: Multiple trees from 2663 to 2959 ft from DER, 1166 to 1234 ft right of centerline, 85 ft AGL/619 ft MSL. Trees 3316 ft from DER, 1040 ft left of centerline, 70 ft AGL/621 ft MSL.

**ATC RADAR
MONITORING
REQUIRED**

DEPARTURE ROUTE DESCRIPTION

TAKE-OFF RWY 14: Climb heading 140° to 1100, then climbing right turn to heading 270°, intercept EIL TACAN R-215 outbound to BOJAA. Climb and maintain 3700 or assigned altitude.

TAKE-OFF RWY 32: Climbing left turn to heading 162° to TRURO then continue outbound on EIL TACAN R-215 to BOJAA. Maintain at or above 3700 or assigned altitude.

BOJAA TWO DEPARTURE (BOJAA2•BOJAA)

Orig 26MAR20

FAIRBANKS, ALASKA
EIELSON AFB (PAEI)

AK, 12 AUG 2021 to 07 OCT 2021

AK, 12 AUG 2021 to 07 OCT 2021