

# DELTA-SIX DEPARTURE

SH-1729 [USAF]

EIELSON AFB (PAEI)

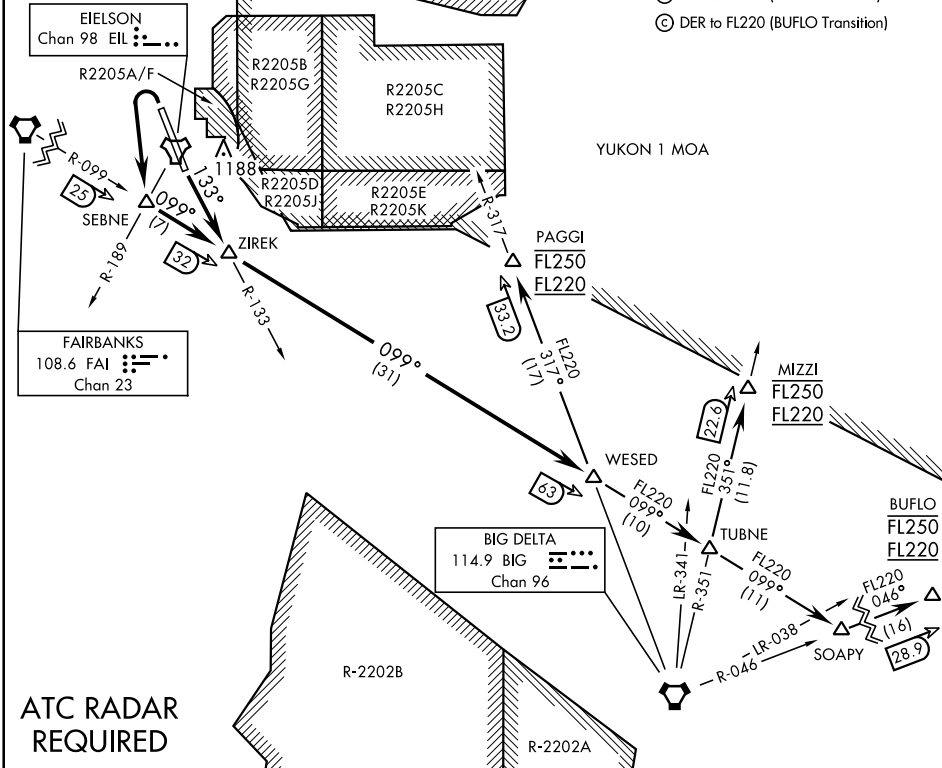
FAIRBANKS, ALASKA

ATIS ★ 119.9 273.5  
 CLINC DEL 343.7  
 EIELSON GND CON 121.8 275.8  
 EIELSON TOWER ★ 127.2 352.05  
 FAIRBANKS DEP CON 127.1 338.275

Rwy	Knots	60	120	180	240	300	360
4/32Ⓐ	V/V(fpm)	444	888	1332	1776	2220	2664
4/32Ⓑ	V/V(fpm)	410	820	1230	1640	2050	2460
4/32Ⓒ	V/V(fpm)	303	606	909	1212	1515	1818

ATC Climb Rate

- Ⓐ DER to FL220 (PAGGI Transition)
- Ⓑ DER to FL220 (MIZZI Transition)
- Ⓒ DER to FL220 (BUFLO Transition)



**ATC RADAR REQUIRED**

## DEPARTURE ROUTE DESCRIPTION

**TAKE-OFF RWY 14 (DELTA6 • ZIREK):** Intercept EIL TACAN R-133 to join FAI VORTAC R-099 at ZIREK and track outbound. Thence . . .

**TAKE-OFF RWY 32 (DELTA6 • ZIREK):** Turn left to intercept FAI VORTAC R-099 at SEBNE. Proceed outbound direct ZIREK. Thence . . .

**BUFLO GATE TRANSITION (DELTA6 • BUFLO):** Turn left at SOAPY and track outbound on BIG VORTAC R-046 to BUFLO. Cross BUFLO at FL220 block FL250.

**MIZZI GATE TRANSITION (DELTA6 • MIZZI):** Turn left at TUBNE and track outbound on BIG VORTAC R-351 to MIZZI. Cross MIZZI at FL220 block FL250.

**PAGGI GATE TRANSITION (DELTA6 • PAGGI):** Turn left at WESED and track outbound on BIG VORTAC R-317 to PAGGI. Cross PAGGI at FL220 block FL250.

## DELTA-SIX DEPARTURE

Orig 26MAR20

FAIRBANKS, ALASKA  
 EIELSON AFB (PAEI)

AK, 12 AUG 2021 to 07 OCT 2021

AK, 12 AUG 2021 to 07 OCT 2021