

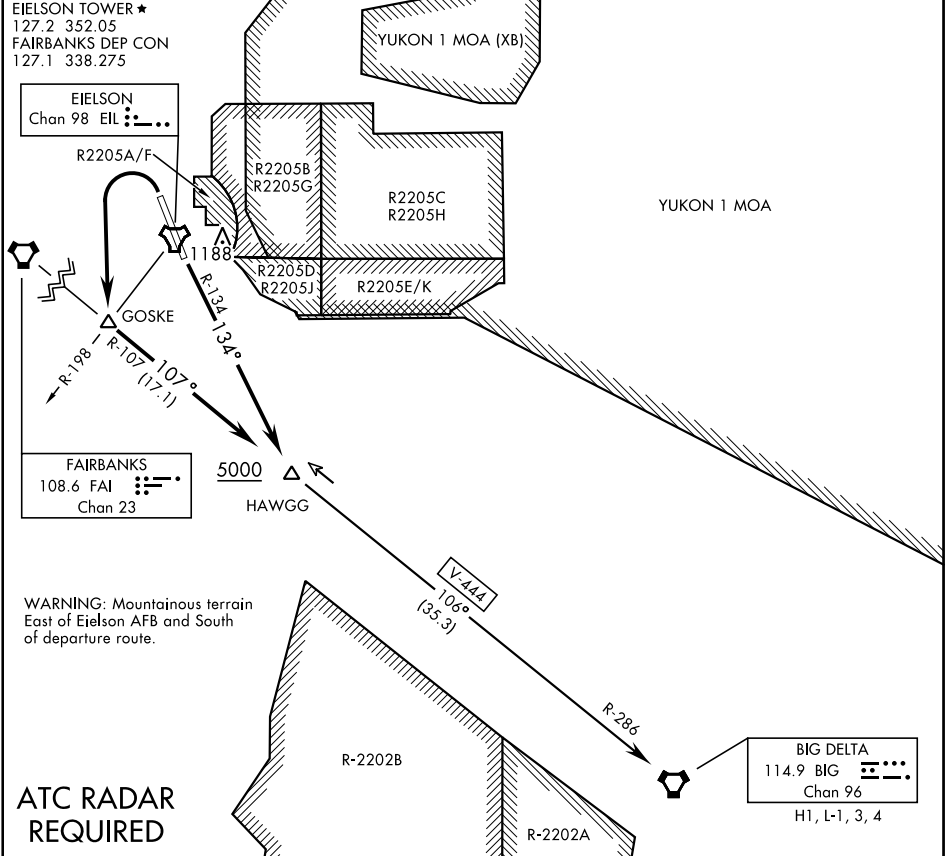
HAWGG SEVEN DEPARTURE (HAWGG7•HAWGG)

EIELSON AFB (PAEI)

FAIRBANKS, ALASKA

ATIS ★ 119.9 273.5	SHL-1729 [USAF]	YUKON 2 MOA	Rwy	Knots	60	120	180	240	300	360
CLINC DEL 343.7			32	V/V(fpm)	214	428	642	856	1070	1284
EIELSON GND CON 121.8 275.8			14	V/V(fpm)	241	482	723	964	1205	1446

ATC Climb Rate to 5000



AK, 12 AUG 2021 to 07 OCT 2021

AK, 12 AUG 2021 to 07 OCT 2021

WARNING: Mountainous terrain East of Eielson AFB and South of departure route.

ATC RADAR REQUIRED

DEPARTURE ROUTE DESCRIPTION

TAKE-OFF RWY 14: Turn left to join EIL TACAN R-134 to FAI VORTAC R-107. Cross HAWGG at or above 5000. Thence . . .

TAKE-OFF RWY 32: Turn left to GOSKE then continue outbound FAI VORTAC R-107 to HAWGG. Cross HAWGG at or above 5000. Thence . . .

Intercept V-444 to BIG VORTAC, then via assigned route.

HAWGG SEVEN DEPARTURE (HAWGG7•HAWGG)

FAIRBANKS, ALASKA

EIELSON AFB (PAEI)

