

FAIRBANKS, ALASKA

# IIS or LOC/DME RWY 32

LOC I-EAF <b>109.9</b>	APCH CRS <b>320°</b>	Rwy Ldg <b>14,530</b> TDZE <b>548</b> Arpt Elev <b>548</b>	AL-1729 [USAF]	EIELSON AFB (PAEI)
---------------------------	-------------------------	---	----------------	--------------------

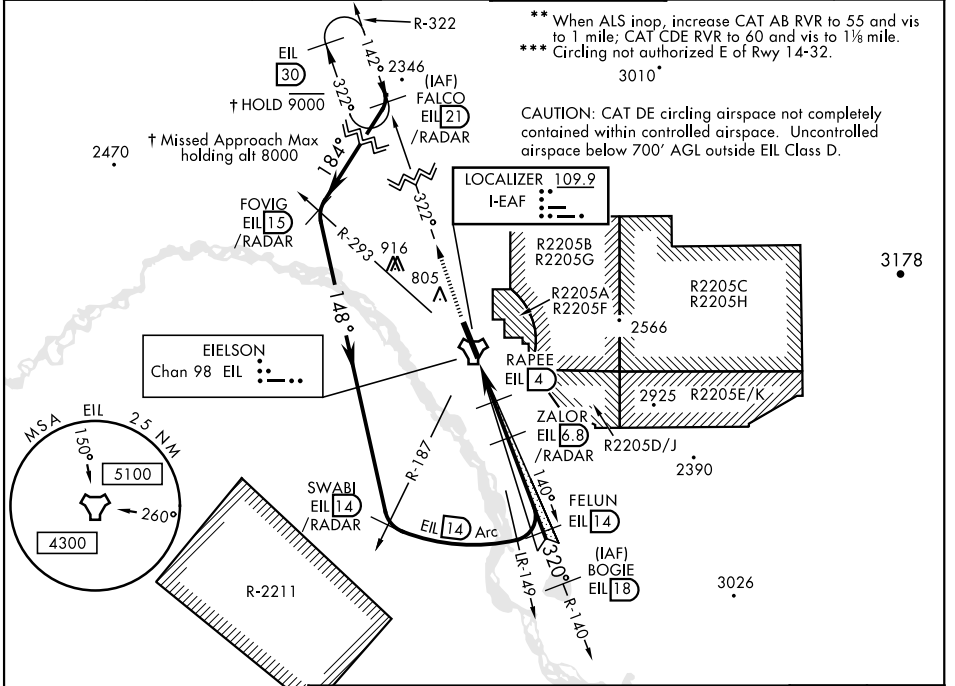
DME or RADAR required. RADAR required between FALCO-FOVIG-SWABI

ALS-F1

MISSED APPROACH: Climb to 6000 on EIL TACAN R-322 to FALCO and hold. Continue climb-in-hold to 6000.

▼ \* When ALS inop, increase RVR to 40 and vis to 3/8 mile.

ATIS ★ <b>119.9 273.5</b>	ASOS <b>118.525</b>	FAIRBANKS APP CON <b>127.1 251.1 360° - 179°</b> <b>125.35 363.2 180° - 359°</b>	EIELSON TOWER ★ <b>127.2 352.05</b>	GND CON <b>121.8 275.8</b>	CLNC DEL <b>343.7</b>
------------------------------	------------------------	--	--	-------------------------------	--------------------------

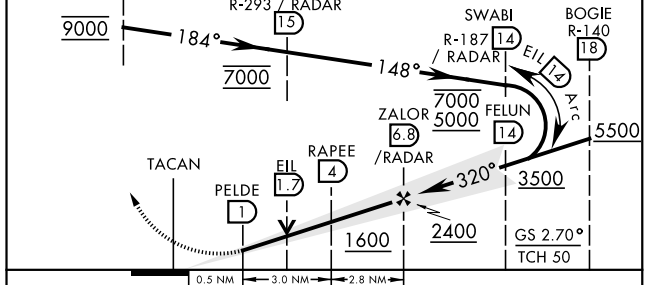
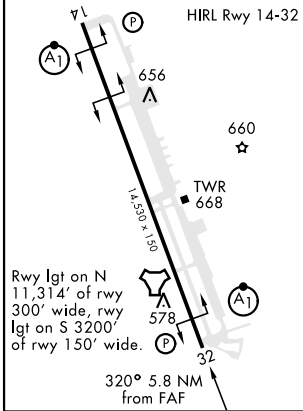


\*\* When ALS inop, increase CAT AB RVR to 55 and vis to 1 mile; CAT CDE RVR to 60 and vis to 1 1/8 mile.

\*\*\* Circling not authorized E of Rwy 14-32.

CAUTION: CAT DE circling airspace not completely contained within controlled airspace. Uncontrolled airspace below 700' AGL outside EIL Class D.

EMERG SAFE ALT 100 NM 16,000		VGSi and ILS glidepath not coincident (VGSi angle 2.70/TCH 44).		6000	FALCO R-322
ELEV 548	TDZE 548	FALCO R-322 /RADAR EIL 21	FOVIG R-293 /RADAR EIL 15	EIL R-322	FALCO R-322 EIL 21



CATEGORY	A	B	C	D	E
S-ILS 32*	748/24 200 (200-1/2)				
S-LOC 32**	960/24 412 (500-1/2)	960/40 412 (500-3/4)			
CIRCLING***	1000-1 452 (500-1)	1040-1 492 (500-1)	1040-1 1/2 492 (500-1 1/2)	1280-2 1/4 732 (800-2 1/4)	1280-2 1/2 732 (800-2 1/2)

FAIRBANKS, ALASKA

64° 40'N-147° 06'W

EIELSON AFB (PAEI)

Amdt 7 17JUN21  
TERPS

# IIS or LOC/DME RWY 32

AK, 12 AUG 2021 to 07 OCT 2021

AK, 12 AUG 2021 to 07 OCT 2021