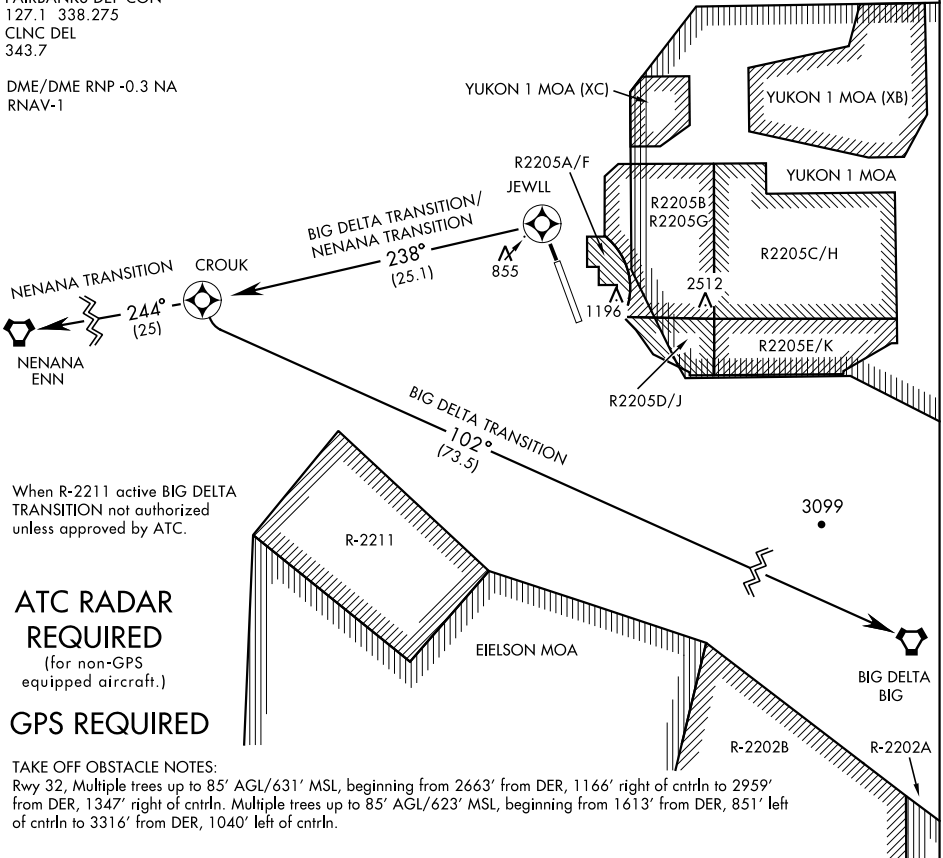


JEWELL TWO DEPARTURE (RNAV) (JEWLL2•JEWLL)

SL-1729 [USAF]

ATIS ★
 119.9 273.5
 EIELSON GND CON
 121.8 275.8
 EIELSON TOWER ★
 127.2 352.05
 FAIRBANKS DEP CON
 127.1 338.275
 CLNC DEL
 343.7

DME/DME RNP -0.3 NA
 RNAV-1



When R-2211 active BIG DELTA TRANSITION not authorized unless approved by ATC.

ATC RADAR REQUIRED
 (for non-GPS equipped aircraft.)

GPS REQUIRED

TAKE OFF OBSTACLE NOTES:
 Rwy 32, Multiple trees up to 85' AGL/631' MSL, beginning from 2663' from DER, 1166' right of cntrln to 2959' from DER, 1347' right of cntrln. Multiple trees up to 85' AGL/623' MSL, beginning from 1613' from DER, 851' left of cntrln to 3316' from DER, 1040' left of cntrln.

DEPARTURE ROUTE DESCRIPTION

TAKE-OFF RWY 32 (JEWLL2•JEWLL): Climb direct JEWLL, thence...

BIG DELTA TRANSITION (JEWLL2•BIG): Turn left, track 238° to CROUK then turn left, track 102° to BIG VORTAC.

NENANA TRANSITION (JEWLL2•ENN): Turn left, track 238° to CROUK then track 244° to ENN VORTAC.

AK, 12 AUG 2021 to 07 OCT 2021

AK, 12 AUG 2021 to 07 OCT 2021