

FAIRBANKS, ALASKA

RNAV (GPS) RWY 14

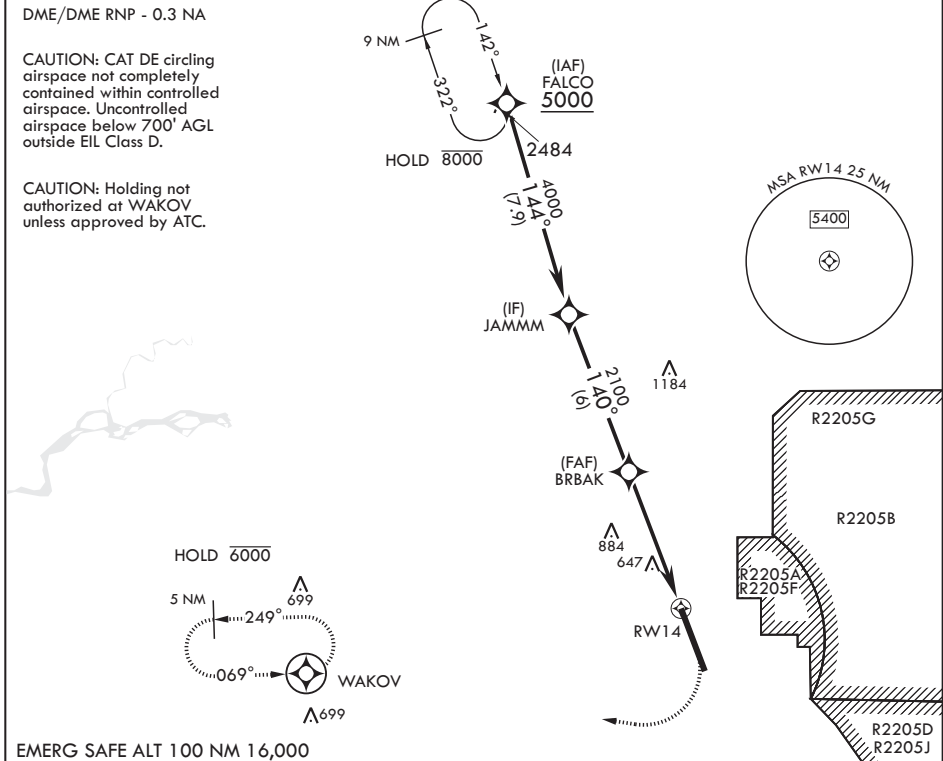
APCH CRS	Rwy Idg	14,530
140°	TDZE	537
	Arprt Elev	548

AL-1729 (USAF)

EIELSON AFB (PAEI)

<p>▼ * When ALS inop, increase RVR to 55 and vis to 1 mile. ** Circling not authorized E Rwy 14-32.</p>	<p>ALSF-1</p>	<p>MISSED APPROACH: Climb to 1100 then climbing right turn to 4000 direct WAKOV and hold, continue climb-in-hold to 4000.</p>

<p>ATIS*</p> <p>119.9 273.5</p>	<p>FAIRBANKS APP CON</p> <p>125.35 363.2 180°-359°</p> <p>127.1 251.1 360°-179°</p>	<p>TOWER*</p> <p>127.2 352.05</p>	<p>GND CON</p> <p>121.8 275.8</p>	<p>CLNC DEL</p> <p>343.7</p>
---------------------------------	---	-----------------------------------	-----------------------------------	------------------------------



FALCO 5000	JAMMM	BRBAK	1.4 NM to RWY 14	RWY 14	WAKOV	ELEV 548	TDZE 537
144°	4000	140°	2100	2.73° TCH 54	1100	4000	
CATEGORY	A	B	C	D	E		
LNAV MDA*	1000/24	463 (500-½)	1000/50	463	(500-1)		
CIRCLING**	1000-1 452 (500-1)	1040-1 492 (500-1)	1040-1½ 492 (500-1½)	1280-2¼ 732 (800-2¼)	1280-2½ 732 (800-2½)		

FAIRBANKS, ALASKA
Amdt 6 17JUN21
TERPS

64°40'N - 147°06'W

EIELSON AFB (PAEI)

RNAV (GPS) RWY 14

AK, 12 AUG 2021 to 07 OCT 2021

AK, 12 AUG 2021 to 07 OCT 2021