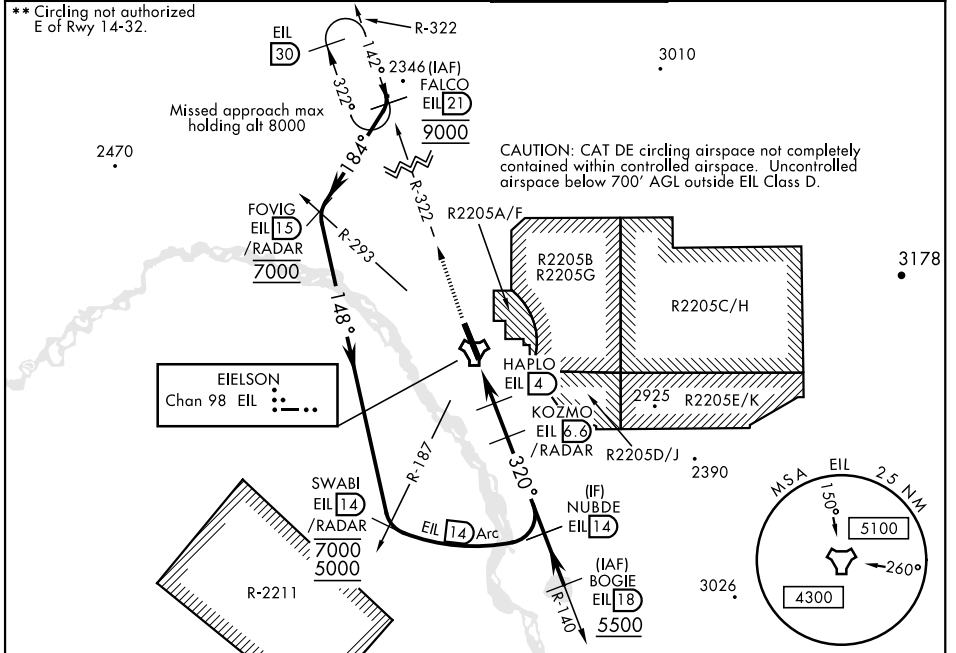


TACAN RWY 32

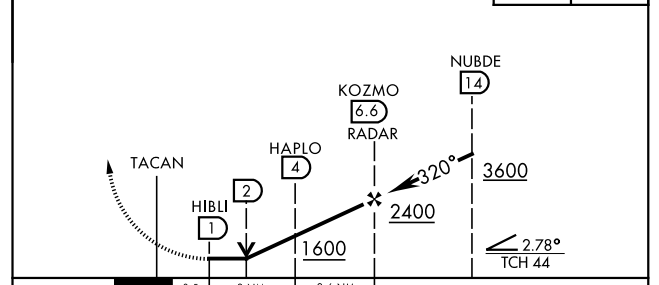
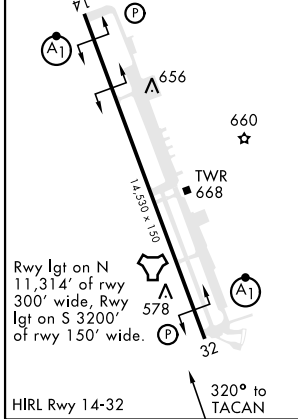
TACAN EIL Chan 98	APCH CRS 320°	Rwy ldg 14,530 TDZE 548 Arprt Elev 548	AL-1729 [USAF]	EIELSON AFB (PAEI)
-----------------------------	-------------------------	---	----------------	--------------------

DME or ATC RADAR required.	ALSIF-1 	MISSED APPROACH: Climb to 6000 on EIL TACAN R-322 to FALCO and hold, Continue climb-in-hold to 6000.
ATC RADAR required (between FALCO-FOVIG-SWABI)		
<p>▼ * When ALS inop, increase CAT AB RVR to 55 and vis to 1 mile; CAT CDE vis to 1 3/8 miles.</p>		

ATIS ★ 119.9 273.5	ASOS 118.525	FAIRBANKS APP CON 127.1 251.1 360° - 179° 125.35 363.2 180° - 359°	EIELSON TOWER ★ 127.2 352.05	GND CON 121.8 275.8	CLNC DEL 343.7
------------------------------	------------------------	--	--	-------------------------------	--------------------------



EMERG SAFE ALT 100 NM 16,000'	ELEV 548	TDZE 548	6000	FALCO
			EIL	R-322
			R-322	(21)



CATEGORY	A	B	C	D	E
S-32 *	1040/24 492 (500-1/2)		1040/50 492 (500-1)		
CIRCLING **	1040-1 492 (500-1)		1040-1 1/2 492 (500-1 1/2)	1280-2 1/4 732 (800-2 1/4)	1280-2 1/2 732 (800-2 1/2)

TACAN RWY 32

AK, 12 AUG 2021 to 07 OCT 2021

AK, 12 AUG 2021 to 07 OCT 2021