

COPTER TACAN 004

TACAN NSE Chan 70	APCH CRS 004°	Rwy ldg TDZE Arprt Elev	5996 N/A 177
-----------------------------	-------------------------	----------------------------	---

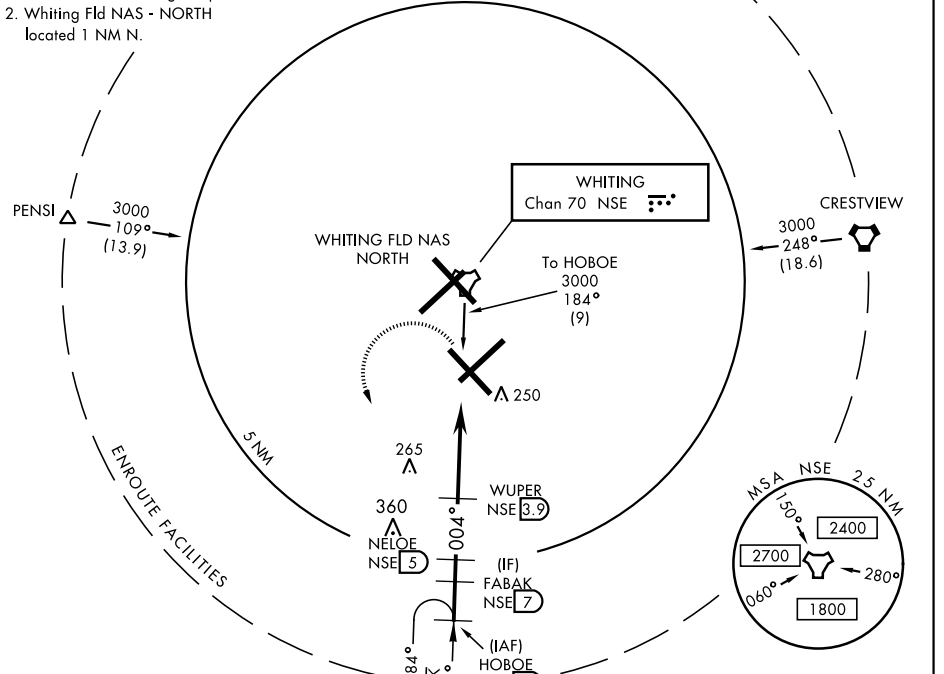
AL-1909 [USN]

WHITING FLD NAS - SOUTH (KNDZ)

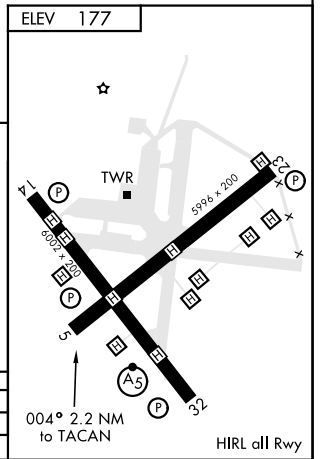
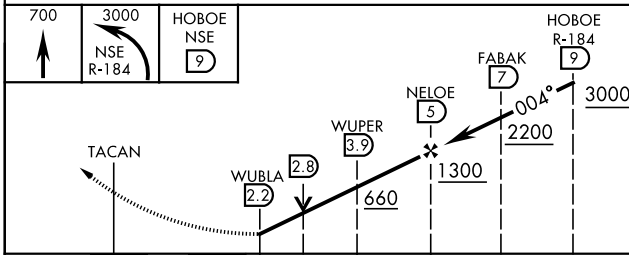
<p>▼ Maximum airspeed 90 KIAS.</p>		<p>MISSED APPROACH: Climb to 700. Then climbing left turn to 3000. Intercept NSE TACAN R-184 to HOBEO and hold. Contact Pensacola Approach Control.</p>			
<p>ATIS ★ 273.575</p>	<p>PENSACOLA APP CON 124.85 385.4</p>	<p>SOUTH WHITING TOWER ★ 121.4 348.675</p>	<p>GND CON 317.65</p>	<p>CLNC DEL 355.6</p>	<p>ASR/ PAR</p>

CAUTION:

1. Intensive VFR training all quadrants.
2. Whiting Fld NAS - NORTH located 1 NM N.



EMERG SAFE ALT 100 NM 3500



CATEGORY	COPTER	
H-004	560-½	383 (400-½)
CIRCLING	NOT AUTHORIZED	

COPTER TACAN 004

SE-3, 09 SEP 2021 to 07 OCT 2021

SE-3, 09 SEP 2021 to 07 OCT 2021