

MILTON, FLORIDA

ILS Y or LOC/DME RWY 32

LOC/DME I-NDZ 110.55 Chan 42(Y)	APCH CRS 319°	Rwy Ildg TDZE 172 Arprt Elev 177	6002
---	-------------------------	--	-------------

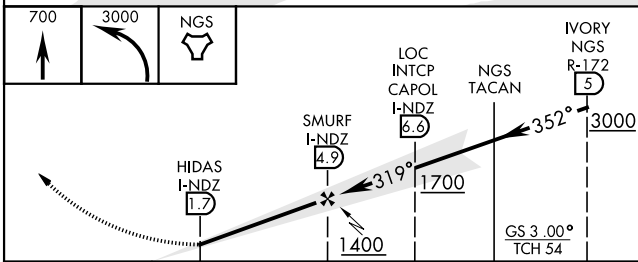
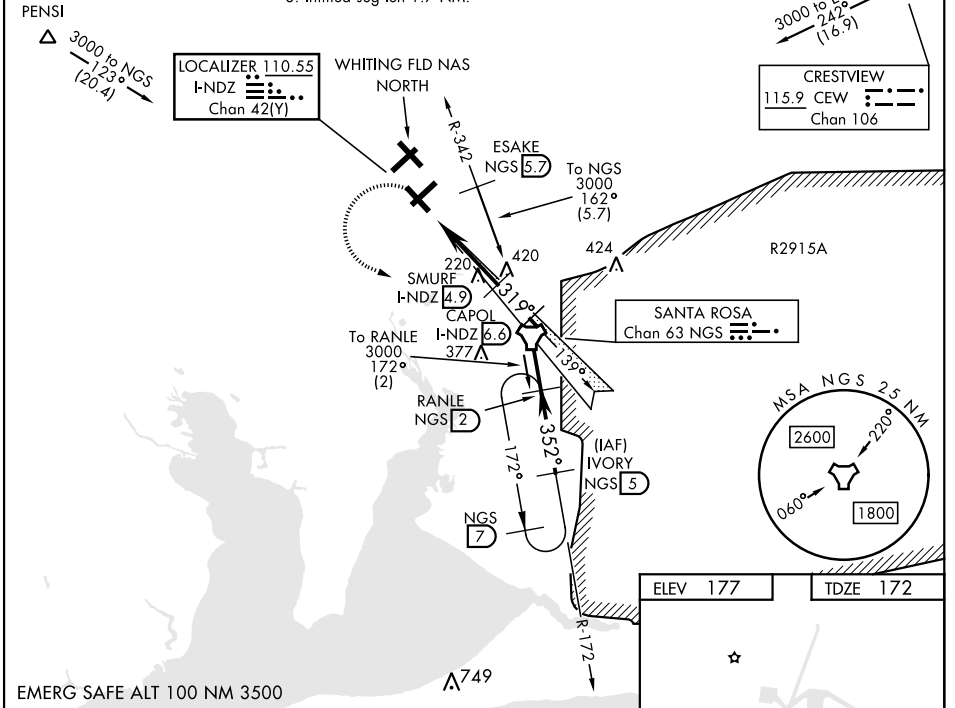
AL-1909 [UNJ]

WHITING FLD NAS - SOUTH (KNDZ)

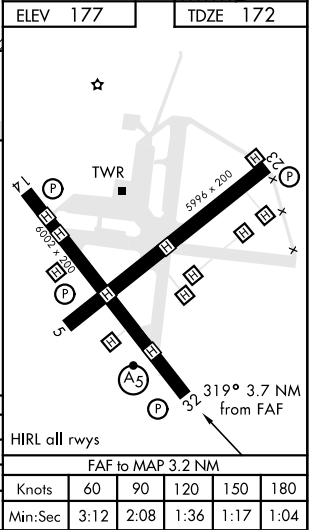
TACAN Required. ▼ *When ALS inop, increase vis to ¾ mile. **When ALS inop, increase vis to 1 mile. *** Circling not authorized NE of Rwy 14-32 and NW of Rwy 5-23.	MALS R (A5)	MISSED APPROACH: Climb to 700, then climbing left turn to 3000 direct NGS TACAN. Then via R-172 to RANLE and hold continue climb in hold. Contact Pensacola Approach Control.
---	-------------	---

ATIS 273.575	PENSACOLA APP CON 124.85 385.4	SOUTH WHITING TOWER 121.4 348.675	GND CON 317.65	CLNC DEL 355.6	ASR/PAR
------------------------	--	---	--------------------------	--------------------------	---------

- CAUTION: 1. Intensive VFR student training all quadrants.
 2. Whiting FLD NAS - NORTH located 1 NM N.
 3. Inrtmed seg len 1.7 NM.



CATEGORY	A	B	C	D
S-ILS 32*		372-½	200 (200-½)	
S-LOC 32**		480-½	308 (400-½)	
*** CIRCLING	620-1 443 (500-1)	640-1 463 (500-1)	660-1½ 483 (500-1½)	740-2 563 (600-2)



MILTON, FLORIDA
 Amdt 6 12AUG21

30°42'N-87°01'W

WHITING FLD NAS - SOUTH (KNDZ)

ILS Y or LOC/DME RWY 32

SE-3, 09 SEP 2021 to 07 OCT 2021

SE-3, 09 SEP 2021 to 07 OCT 2021