

TACAN RWY 32

TACAN NGS Chan 63	APCH CRS 322°	Rwy ldg TDZE Arprt Elev	6002 172 177
-----------------------------	-------------------------	-------------------------------	---

AL-1909 [USN]

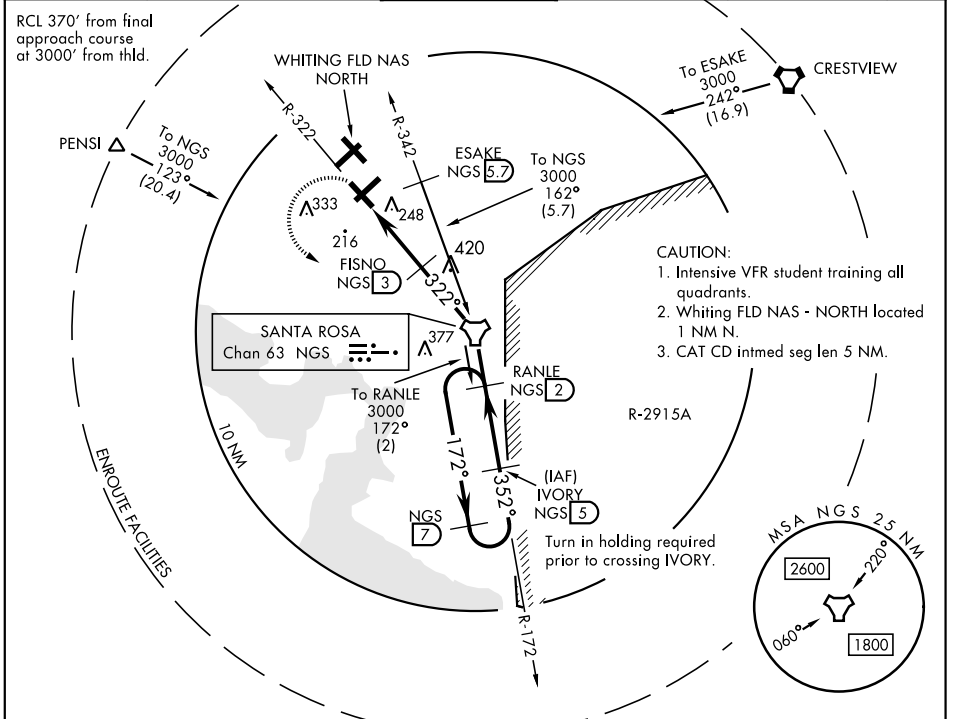
WHITING FLD NAS - SOUTH (KNDZ)

▼ * When ALS inop, increase vis to 1 mile.
 ** Circling not authorized NE of Rwy 14-32 and NW of Rwy 5-23.



MISSED APPROACH: Climb to 600. Then climbing left turn to 3000 direct NGS TACAN. Then via R-172 to RANLE and hold. Contact Pensacola Approach Control.

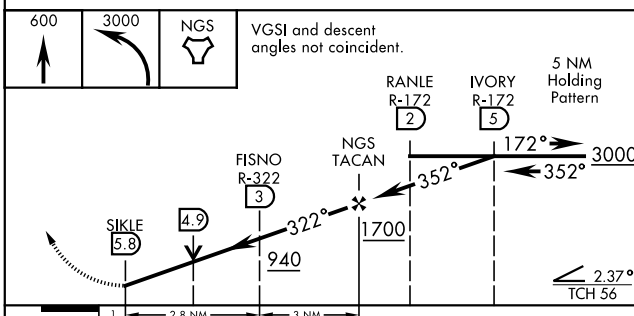
ATIS ★ 273.575	PENSACOLA APP CON 124.85 385.4	SOUTH WHITING TOWER ★ 121.4 348.675	GND CON 317.65	CLNC DEL 355.6	ASR/ PAR
--------------------------	--	---	--------------------------	--------------------------	-------------



SE-3, 09 SEP 2021 to 07 OCT 2021

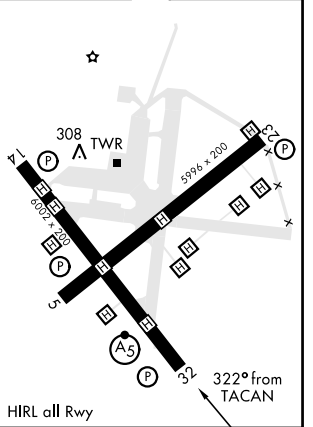
SE-3, 09 SEP 2021 to 07 OCT 2021

EMERG SAFE ALT 100 NM 3500



ELEV 177	TDZE 172
----------	----------

CATEGORY	A	B	C	D
S-32 *	540-½ 368 (400-½)	640-1 368 (400-½)	540-⅝ 368 (400-⅝)	740-2 368 (400-⅝)
CIRCLING **	620-1 443 (500-1)	640-1 463 (500-1)	680-1½ 503 (600-1½)	740-2 563 (600-2)



TACAN RWY 32