

WILLIAMSBURG, VIRGINIA

RNAV (GPS) RWY 23

APCH CRS **230°**
 Rwy ldg **5018**
 TDZE **34**
 Arpt Elev **41**

AL-3214 [USA]

CAMP PEARY LNDG STRIP (KW94)

Restricted airfield, PPR. Contact Camp Peary Ops prior to landing.

MISSED APPROACH: Climb to 2000 direct GAGVE and hold.

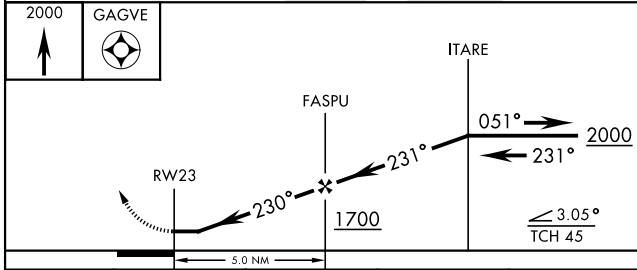
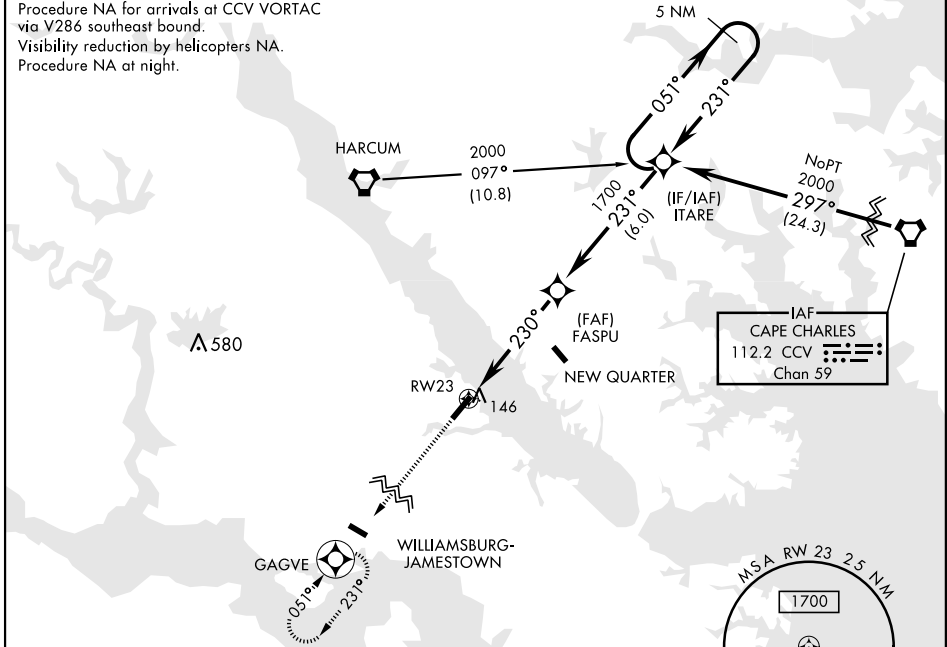
WILLIAMSBURG-JAMESTOWN AWOS-3

120.625

NORFOLK APP CON

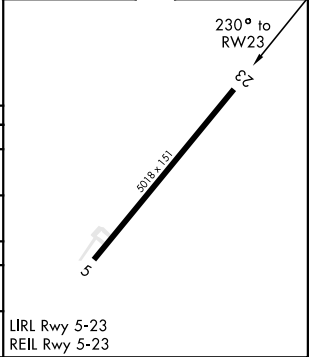
125.7 335.625

DME/DME RNP-0.3 NA
 Procedure NA for arrivals at CCV VORTAC via V286 southeast bound.
 Visibility reduction by helicopters NA.
 Procedure NA at night.



ELEV 41 TDZE 34

CATEGORY	A	B	C	D
RNAV MDA	420-1	386 (400-1)		420-1½ 386 (400-1½)
CIRCLING	500-1	459 (500-1)	500-1½ 459 (500-1½)	620-2 579 (600-2)
NEWPORT NEWS / WILLIAMSBURG INTL ALTIMETER SETTING				
RNAV MDA	440-1	404 (400-1)	440-1½	404 (400-1½)
CIRCLING	520-1	479 (500-1)	520-1½ 479 (500-1½)	640-2 599 (600-2)



WILLIAMSBURG, VIRGINIA

37°18'N-76°38'W

CAMP PEARY LNDG STRIP (KW94)

Orig 18200

RNAV (GPS) RWY 23

NE-3, 09 SEP 2021 to 07 OCT 2021

NE-3, 09 SEP 2021 to 07 OCT 2021