

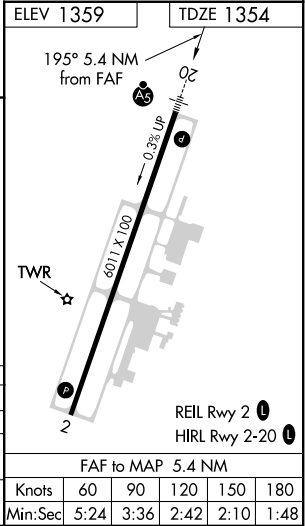
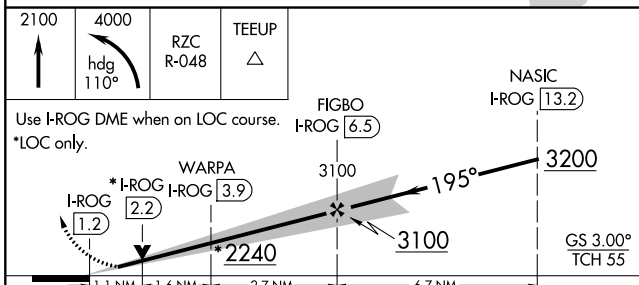
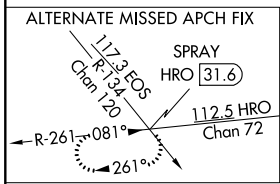
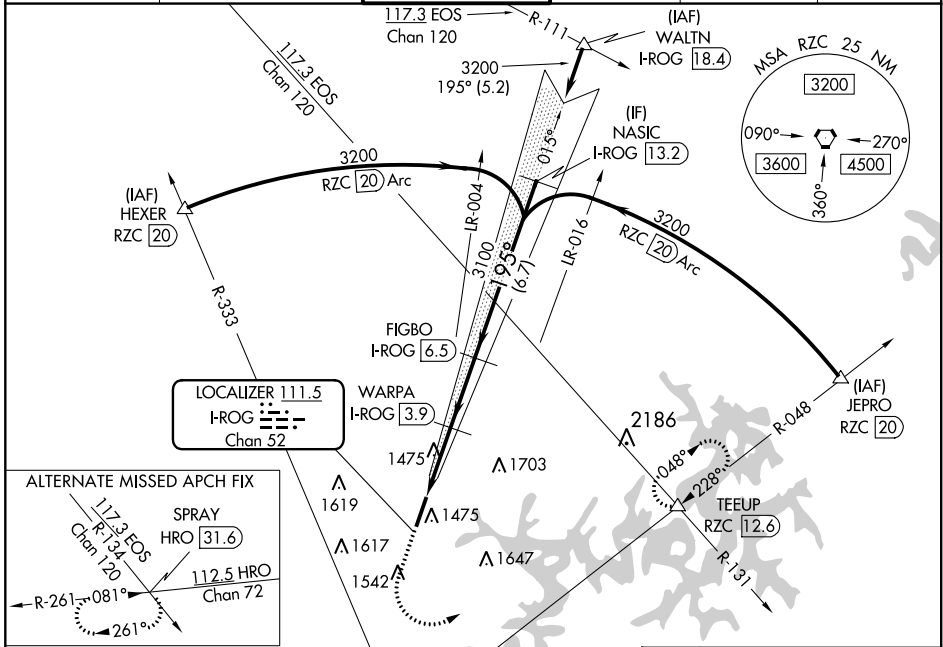
LOC/DME I-ROG 111.5 Chan 52	APP CRS 195°	Rwy Idg 6011 TDZE 1354 Apt Elev 1359
--	------------------------	---

ILS or LOC RWY 20

ROGERS EXEC-CARTER FLD (ROG)

<p>▼ DME required.</p> <p>▲ Autopilot coupled approach NA below 1632.</p>	<p>MALSR</p>	<p>MISSED APPROACH: Climb to 2100, then climbing left turn to 4000 on heading 110° and RZC VORTAC R-048 to TEEUP INT/RZC 12.6 DME and hold.</p>
---	--------------	---

AWOS-3PT 134.375	RAZORBACK APP CON * 126.6 305.2	ROGERS TOWER * 119.375 (CTAF) 0	GND CON 118.0	CLNC DEL 121.75	CLNC DEL 121.75 (When twr closed)
----------------------------	---	---	-------------------------	---------------------------	--



CATEGORY	A	B	C	D
S-ILS 20	1554-½ 200 (200-½)			
S-LOC 20	1740-½ 386 (400-½)	1740-⅝ 386 (400-⅝)		
C CIRCLING	1820-1 461 (500-1)	2020-1¾ 661 (700-1¾)	2020-2 661 (700-2)	

SC-1, 09 SEP 2021 to 07 OCT 2021

SC-1, 09 SEP 2021 to 07 OCT 2021