

WAAS CH <b>40003</b> <b>W20A</b>	APP CRS <b>195°</b>	Rwy ldg TDZE Apt Elev	<b>6011</b> <b>1354</b> <b>1359</b>
--	------------------------	-----------------------------	---

# RNAV (GPS) RWY 20

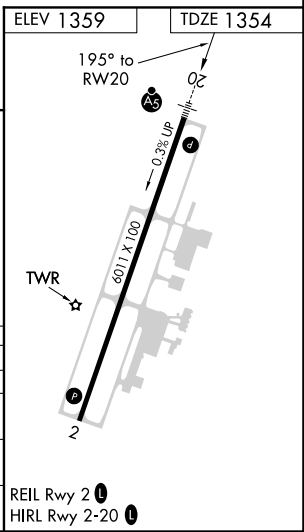
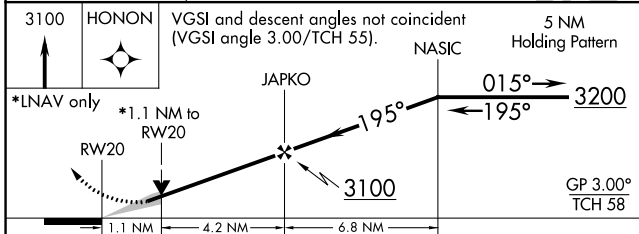
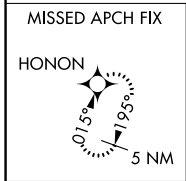
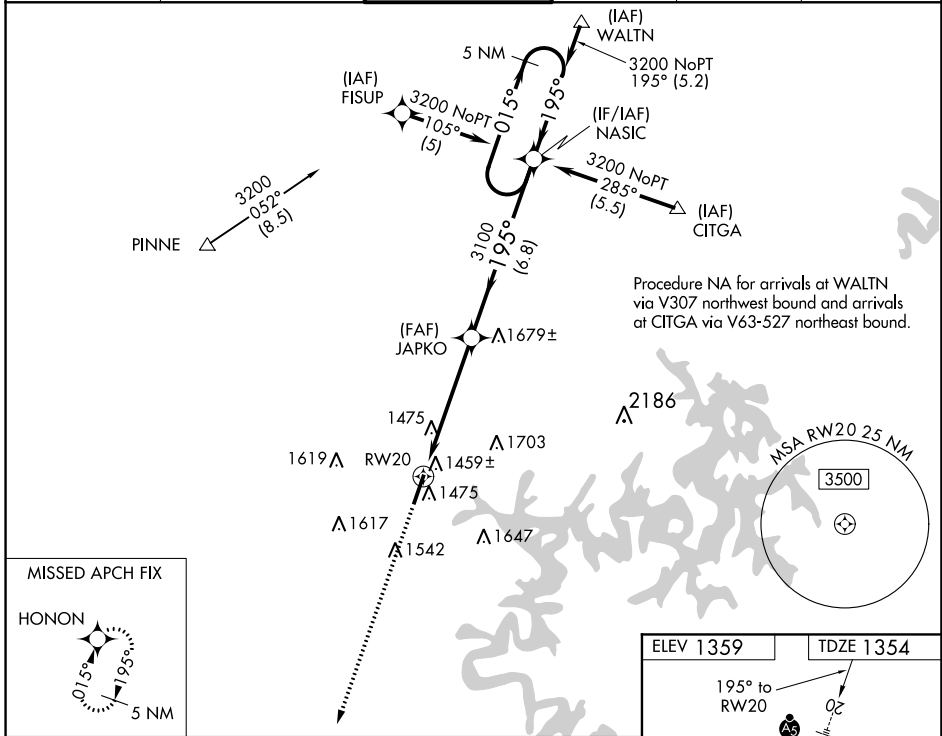
ROGERS EXEC-CARTER FLD (ROG)

**⚠** For inop MALS, increase LNAV Cat D to 1¼. For uncompensated Baro-VNAV systems, LNAV/VNAV NA below -17°C (2°F) or above 46°C (114°F). DME/DME RNP-0.3 NA. If local altimeter setting not received, use Bentonville Muni altimeter setting and increase all DAs 22 feet and all MDAs 40 feet. Baro-VNAV and VDP NA when using Bentonville Muni altimeter setting.



**MISSED APPROACH:**  
Climb to 3100 direct HONON and hold.

AWOS-3PT <b>134.375</b>	RAZORBACK APP CON* <b>126.6 305.2</b>	<b>ROGERS TOWER*</b> <b>119.375 (CTAF)</b>	GND CON <b>118.0</b>	CLNC DEL <b>121.75</b>	CLNC DEL <b>121.75</b> <small>(When twr closed)</small>
----------------------------	--	---	-------------------------	---------------------------	---



CATEGORY	A	B	C	D
LPV DA	1604-½		250 (300-½)	
LNAV/VNAV DA	1730-¾		376 (400-¾)	
LNAV MDA	1740-½		386 (400-½)	
CIRCLING	1820-1		2020-1¾	
	461 (500-1)		661 (700-1¾)	
			2020-2	
			661 (700-2)	

SC-1, 09 SEP 2021 to 07 OCT 2021

SC-1, 09 SEP 2021 to 07 OCT 2021