

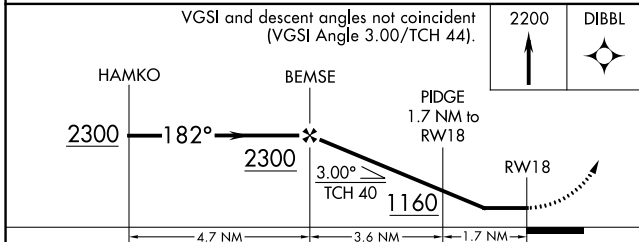
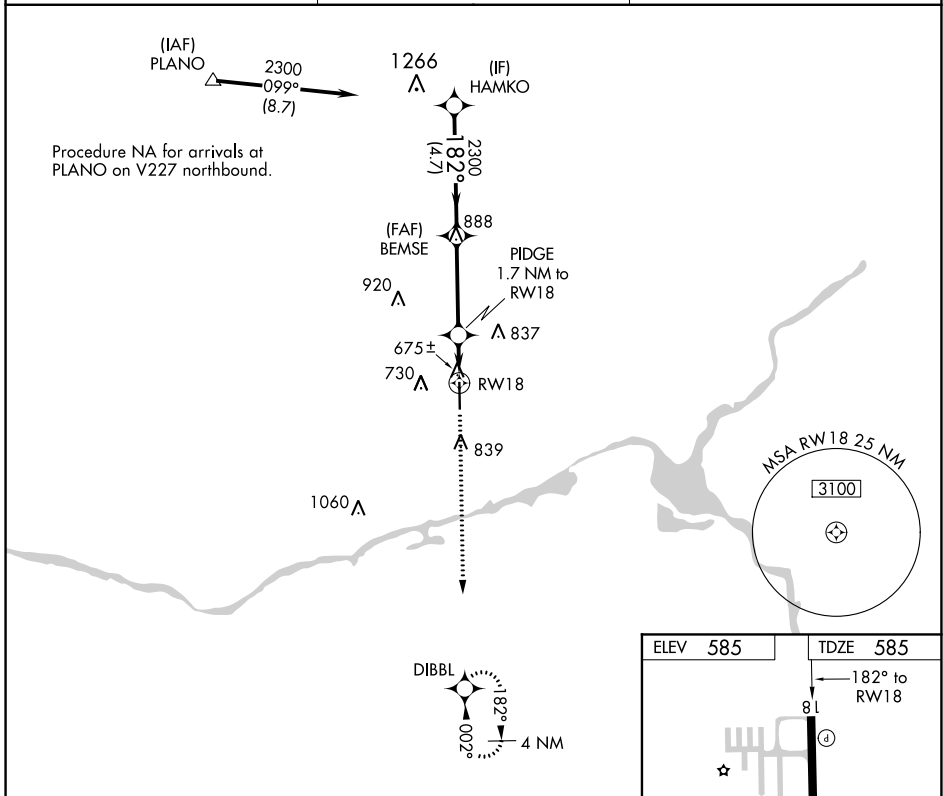
APP CRS	Rwy Idg	5501
182°	TDZE	585
	Apt Elev	585

RNAV (GPS) RWY 18

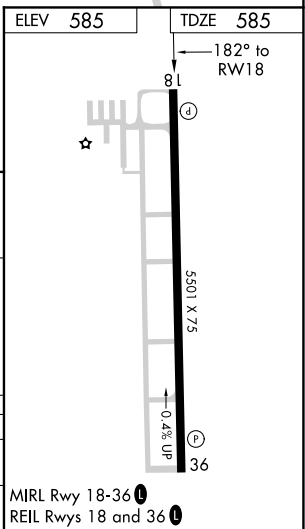
MORRIS MUNI-JAMES R WASHBURN FIELD (C09)

RNP APCH.	<p>▼ Rwy 18 helicopter visibility reduction below 1 SM NA. When local altimeter setting not received, use Joliet altimeter setting and increase all MDA 40 feet, and increase LNAV Cat C visibility 1/8 mile. Straight-in, Circling Rwy 18 NA at night.</p>	<p>▲ MISSED APPROACH: Climb to 2200 direct DIBBL and hold.</p>
-----------	---	--

AWOS-3 118.175	CHICAGO APP CON 119.35 354.075	UNICOM 122.8 (CTAF) 0
--------------------------	--	---------------------------------



CATEGORY	A	B	C	D
LNAV MDA	940-1	355 (400-1)		NA
▲ CIRCLING	980-1 395 (400-1)	1140-1 555 (600-1)	1140-1½ 555 (600-1½)	NA



EC-3, 09 SEP 2021 to 07 OCT 2021

EC-3, 09 SEP 2021 to 07 OCT 2021