

APP CRS	Rwy Idg	5501
002°	TDZE	570
	Apt Elev	585

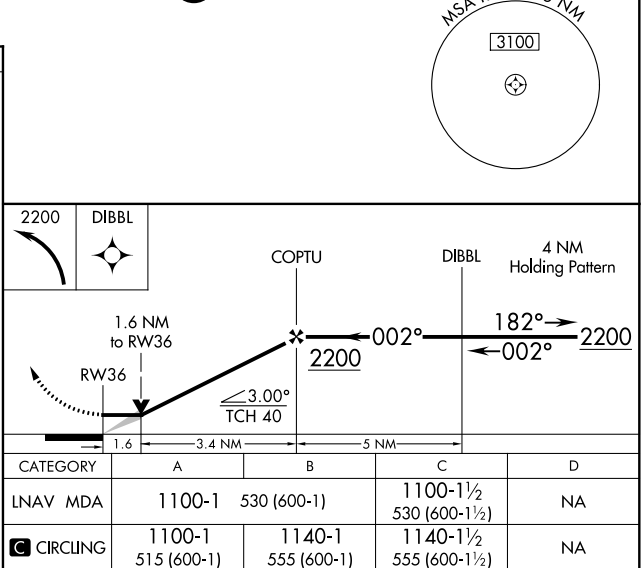
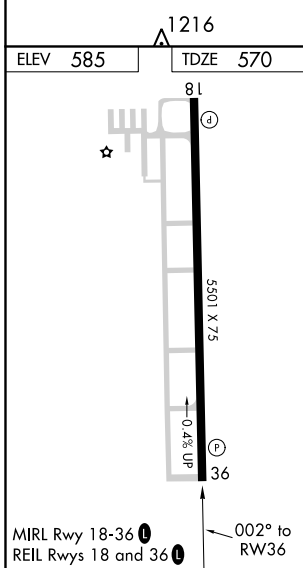
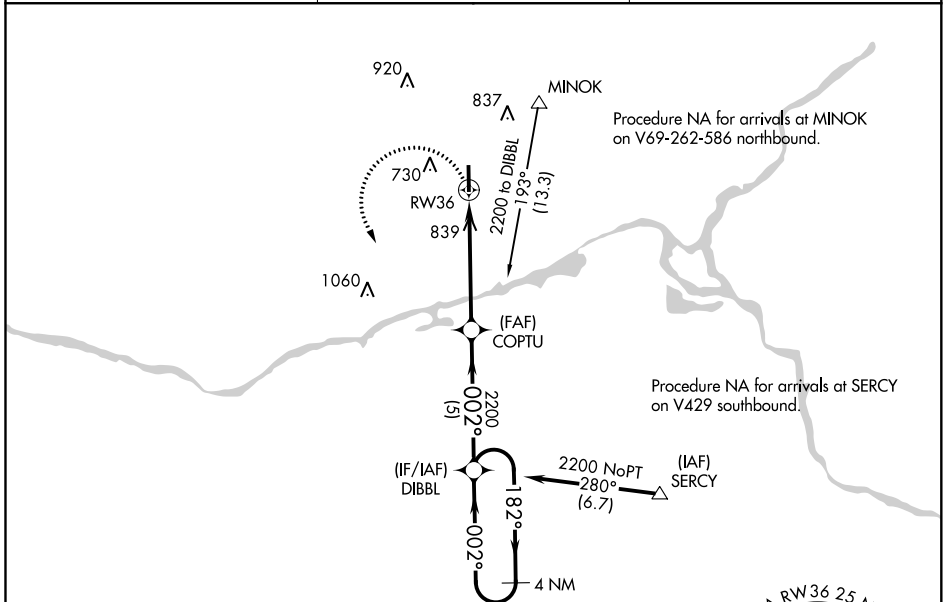
RNAV (GPS) RWY 36

MORRIS MUNI-JAMES R WASHBURN FIELD (C09)

⚠ Night landing: Rwy 18 NA. DME/DME RNP-0.3 NA. VDP NA with Joliet altimeter setting. When local altimeter setting not received, use Joliet altimeter setting and increase all MDA 40 feet, and increase LNAV and Circling Cat C visibility 3/8 mile.

⚠ MISSED APPROACH: Climbing left turn to 2200 direct DIBBL and hold.

AWOS-3 118.175	CHICAGO APP CON 119.35 354.075	UNICOM 122.8 (CTAF) 0
--------------------------	--	---------------------------------



EC-3, 09 SEP 2021 to 07 OCT 2021

EC-3, 09 SEP 2021 to 07 OCT 2021