

VORTAC IGB <b>116.2</b> Chan <b>109</b>	APP CRS <b>096°</b>	Rwy Idg TDZE Apt Elev	<b>N/A</b> <b>N/A</b> <b>188</b>
---	------------------------	-----------------------------	--

**VOR-A**

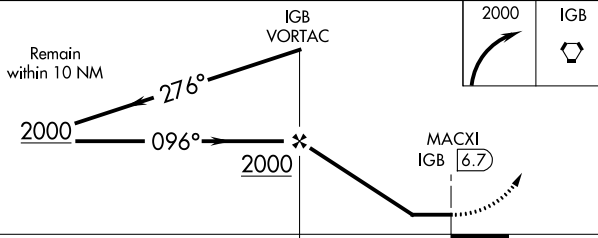
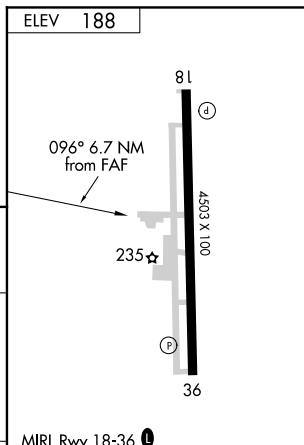
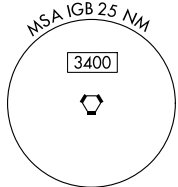
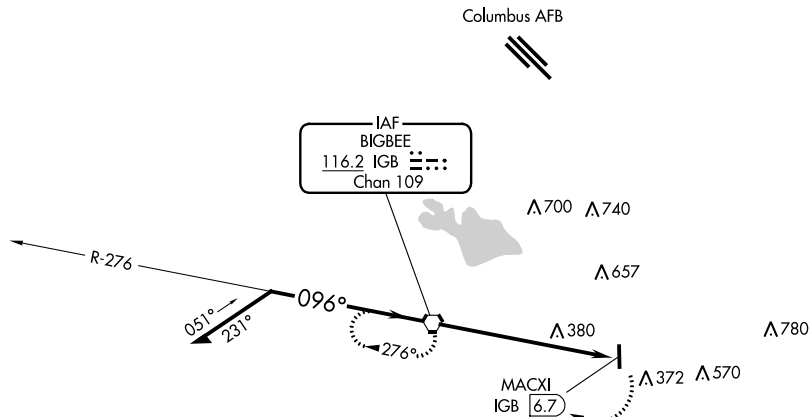
COLUMBUS-LOWNDES COUNTY (UBS)

**▼** Use Columbus AFB altimeter setting; when not received, use Golden Triangle Rgnl altimeter setting and increase all MDA 20 feet.

MISSED APPROACH: Climbing right turn to 2000 direct IGB VORTAC and hold.

COLUMBUS APP CON ★  
**135.6 323.275**

UNICOM  
**122.8 (CTAF) 0**



CATEGORY	A		B		C		D		FAF to MAP 6.7 NM				
	780-1	592 (600-1)	1040-2½	852 (900-2½)	1040-2¾	852 (900-2¾)	Knots	60	90	120	150	180	
<b>C</b> CIRCLING								Min:Sec	6:42	4:28	3:21	2:41	2:14

**VOR-A**

SC-4, 09 SEP 2021 to 07 OCT 2021

SC-4, 09 SEP 2021 to 07 OCT 2021