

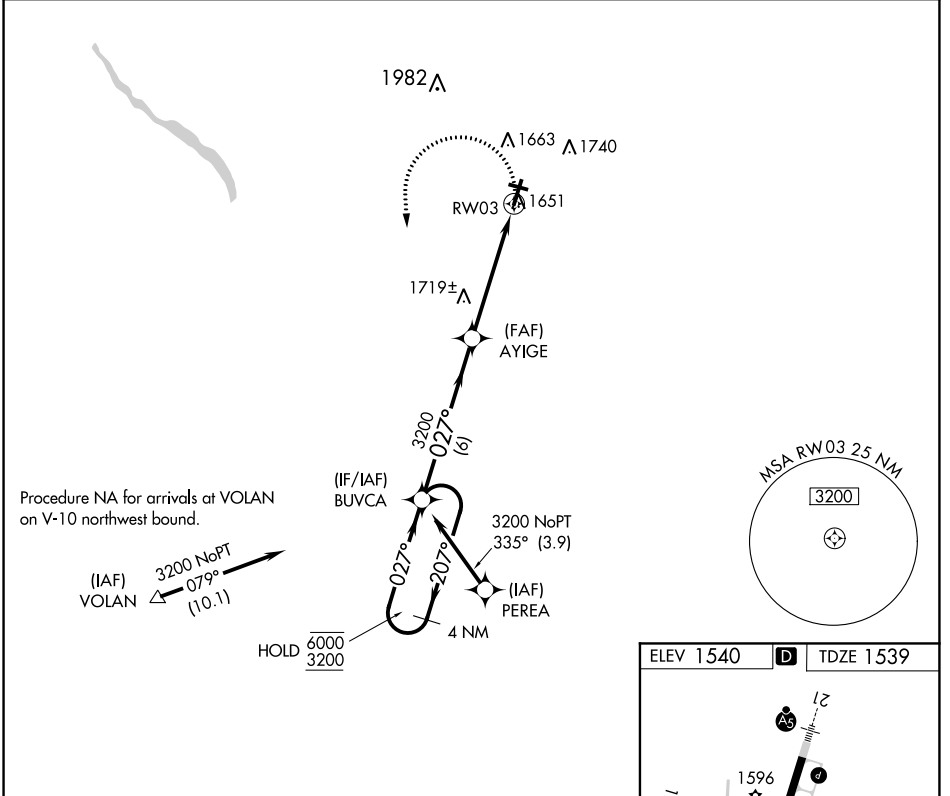
RNAV (GPS) RWY 3

VENANGO RGNL (F'KL)

APP CRS 027°	Rwy Idg 5200
	TDZE 1539
	Apt Elev 1540

RNP APCH.	MISSED APPROACH: Climbing left turn to 3200 direct BUVCA and hold.
Rwy 3 helicopter visibility reduction below 3/4 SM NA.	Circling Rwy 12 NA at night.

AWOS-3PT 118.175	YOUNGSTOWN APP CON ★ 126.25 322.3	CLNC DEL 126.25	UNICOM 122.7 (CTAF)
----------------------------	---	---------------------------	-------------------------------



NE-4, 09 SEP 2021 to 07 OCT 2021

NE-4, 09 SEP 2021 to 07 OCT 2021

4 NM Holding Pattern	Visual Segment-Obstacles.			3200	BUVCA
	BUVCA	AYIGE			
6000 ← 207°	← 027° →	027° →	1.3 NM to RWY 3		
3200		3200			
	6 NM	3.7 NM	1.3		
CATEGORY	A	B	C	D	
LNVA MDA	1980-1	441 (500-1)	1980-1 3/8	441 (500-1 3/8)	
CIRCLING	1980-1 440 (500-1)	2000-1 460 (500-1)	2000-1 1/2 460 (500-1 1/2)	2100-2 560 (600-2)	

