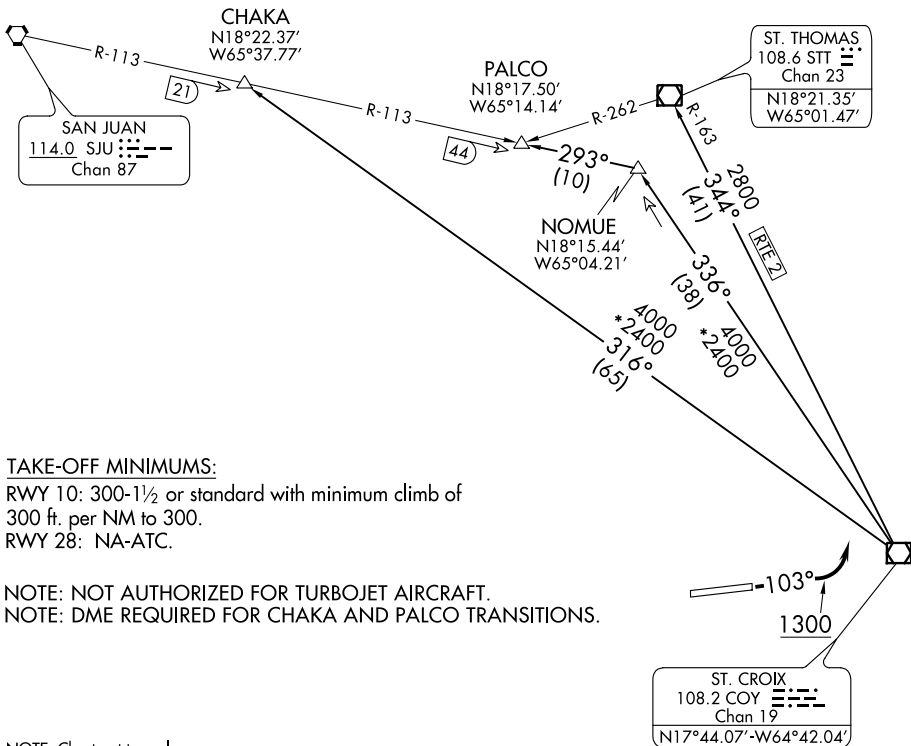


ATIS 135.65  
GND CON  
121.7  
ST. CROIX TOWER\*  
118.6 239.3  
SAN JUAN DEP CON  
128.65 279.6

**TOP ALTITUDE:  
6000**



**TAKE-OFF MINIMUMS:**

RWY 10: 300-1½ or standard with minimum climb of 300 ft. per NM to 300.  
RWY 28: NA-ATC.

NOTE: NOT AUTHORIZED FOR TURBOJET AIRCRAFT.  
NOTE: DME REQUIRED FOR CHAKA AND PALCO TRANSITIONS.

NOTE: Chart not to scale.

**DEPARTURE ROUTE DESCRIPTION**

**TAKE-OFF RUNWAY 10:** Climb via heading 103° to 1300, then climbing left turn to intercept assigned transition. Maintain 6000 unless assigned lower altitude. Expect FL280 or requested altitude ten minutes after departure.

**CHAKA TRANSITION (HMLTN8.CHAKA):** From over COY VOR/DME via COY R-316 to CHAKA/SJU 21 DME.

**PALCO TRANSITION (HMLTN8.PALCO):** From over COY VOR/DME via COY R-336 and SJU R-113 to PALCO INT/SJU 44 DME.

**ST. THOMAS TRANSITION (HMLTN8.STT):** From over COY VOR/DME via COY R-344 to STT VOR/DME.

SE-3, 09 SEP 2021 to 07 OCT 2021

SE-3, 09 SEP 2021 to 07 OCT 2021