

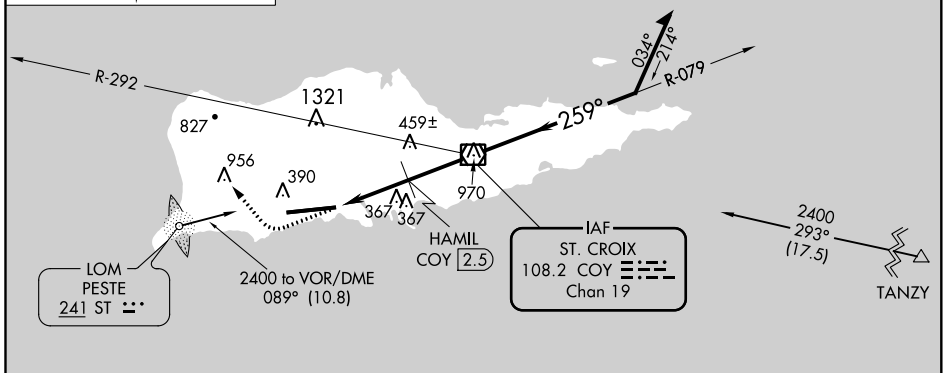
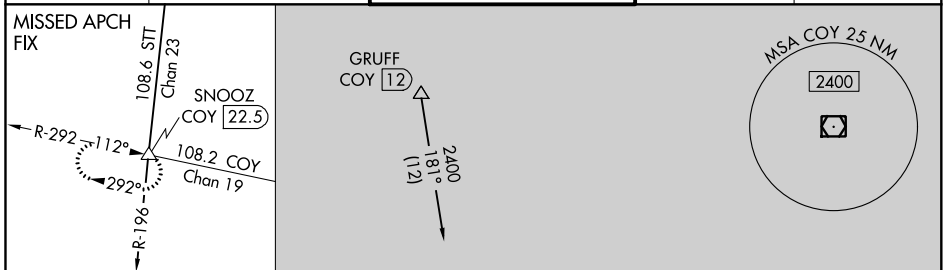
VOR/DME COY 108.2 Chan 19	APP CRS 259°	Rwy ldg 8998 TDZE 40 Apt Elev 74
--	------------------------	---

VOR RWY 28

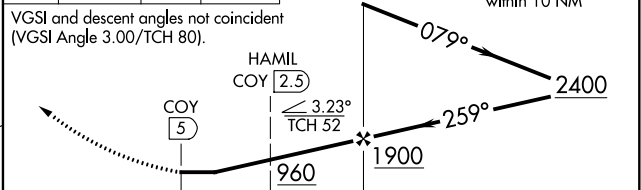
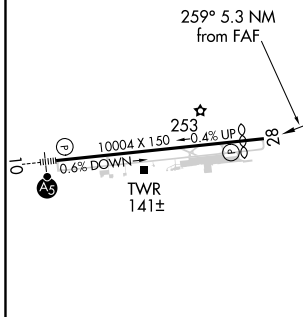
HENRY E ROHLSEN (STX)(TISX)

▼ Helicopter visibility reduction below 1 SM NA. Rwy 28 Straight-in and Circling minimums NA at night. When local altimeter setting not received, procedure NA. Circling NA north of Rwy 10-28.
▲ MISSED APPROACH: Climb to 2000 then climbing right turn to 2400 via heading 330° and COY R-292 to SNOOZ Int/COY 22.5 DME and hold.

ATIS 135.65	SAN JUAN CENTER 128.65 279.6	ST. CROIX TOWER ★ 118.6 (CTAF) 239.3	GND CON 121.7	UNICOM 123.0
-----------------------	--	--	-------------------------	------------------------



ELEV 74	D	TDZE 40	2000	2400	COY	SNOOZ
			↑	↘	R-292	△
			hdg 330°			



CATEGORY	A	B	C	D
S-28	960-1¼	920 (900-1¼)	960-2¾ 920 (900-2¾)	960-3 920 (900-3)
CIRCLING	960-1¼	886 (900-1¼)	960-2¾ 886 (900-2¾)	960-3 886 (900-3)
HAMIL FIX MINIMUMS				
S-28	640-1	600 (600-1)	640-1½ 600 (600-1½)	640-1¾ 600 (600-1¾)
CIRCLING	640-1	566 (600-1)	720-1¾ 646 (700-1¾)	720-2 646 (700-2)

REL Rwy 28
HIRL Rwy 10-28

FAF to MAP 5 NM

Knots	60	90	120	150	180
Min:Sec	5:00	3:20	2:30	2:00	1:40

VOR RWY 28

SE-3, 09 SEP 2021 to 07 OCT 2021

SE-3, 09 SEP 2021 to 07 OCT 2021