

COPTER TACAN 125°

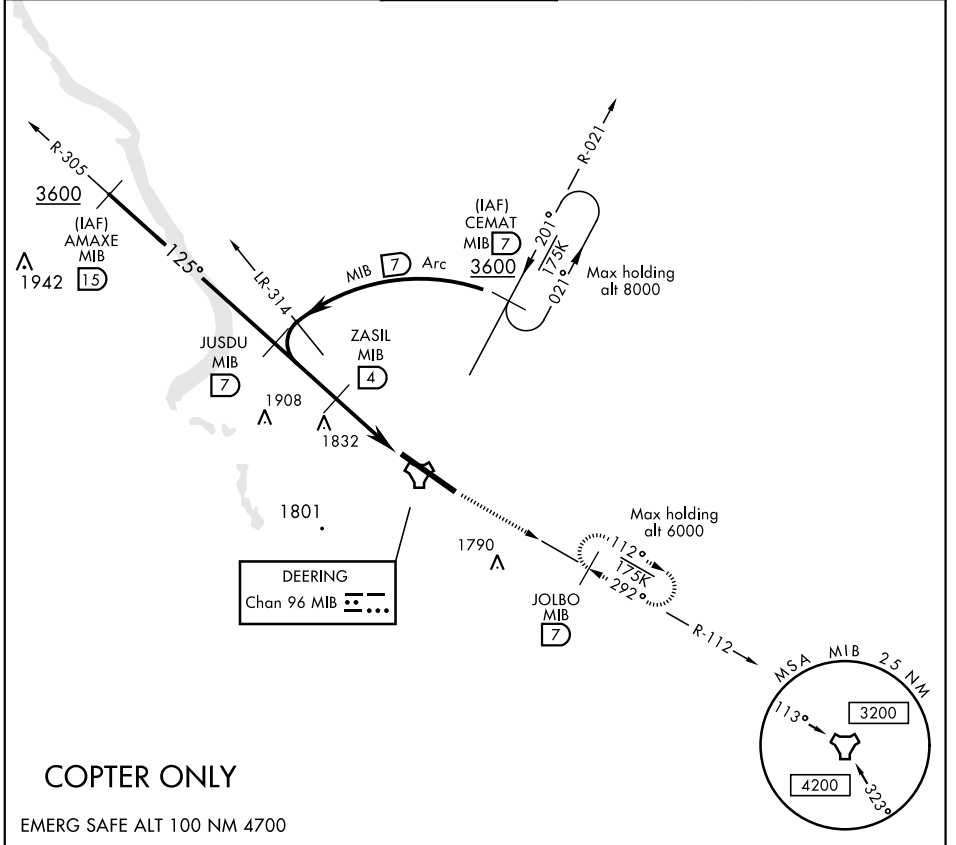
TACAN MIB Chan 96	APCH CRS 125°	Rwy Ldg 13,198 TDZE 1666 Arprt Elev 1666	AL-5013 [USAF]	MINOT AFB (KMIB)
-----------------------------	-------------------------	---	----------------	------------------

* When ALS inop, increase RVR to 28 and vis to ½ mile.

ALSIF-1 

MISSED APPROACH: Climb to 3600 via MIB TACAN R-112 direct JOLBO and hold.

ATIS ★ 278.8	MINOT APP CON 119.6 363.8	MINOT TOWER ★ 120.65 253.5	GND CON 134.0 275.8	CLNC DEL 326.2
------------------------	-------------------------------------	--------------------------------------	-------------------------------	--------------------------



COPTER ONLY

EMERG SAFE ALT 100 NM 4700

JUSDU R-305 MIB 7	ZASIL MIB 4	TACAN	3600 MIB R-112	JOLBO MIB 7	ELEV 1666	TDZE 1666
3000	2600	2.3	1.1			
2.65° TCH 47	125°	2.9 NM	.2			
CATEGORY	COPTER					
H-125°*	2100/12	434	(500-¼)			

HIRL Rwy 12-30

COPTER TACAN 125°

NC-1, 09 SEP 2021 to 07 OCT 2021

NC-1, 09 SEP 2021 to 07 OCT 2021