

HI-ILS or LOC Z RWY 12

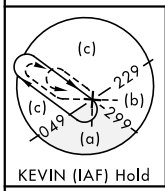
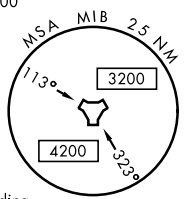
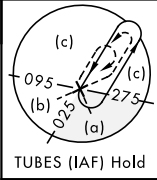
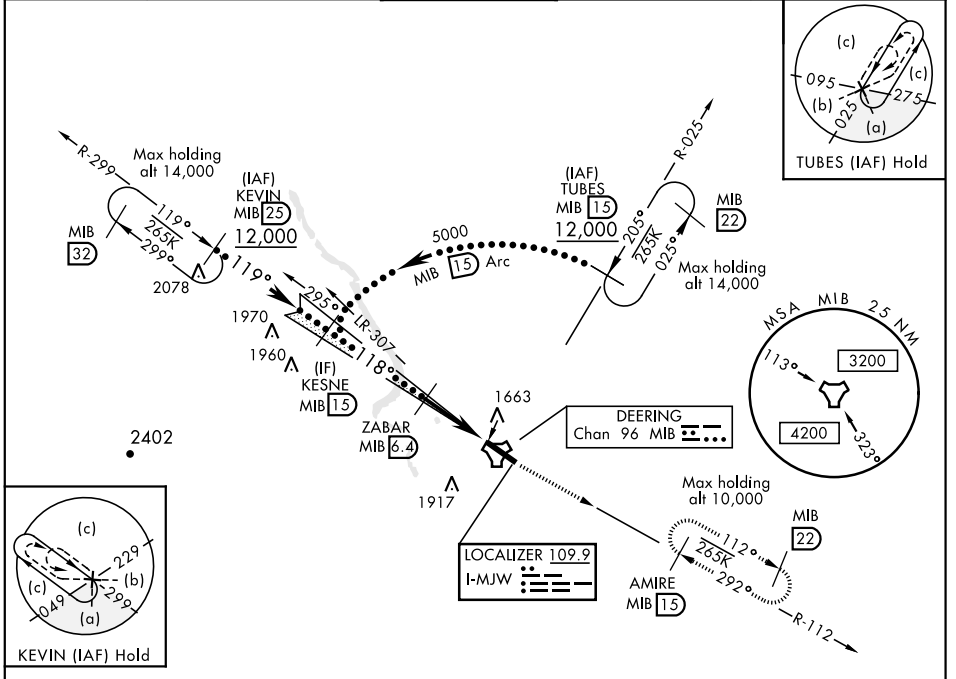
LOC I-MJW 109.9	APCH CRS 118°	Rwy ldg 13,198 TDZE 1666 Arprt Elev 1666	JAL-5013 [USAF]	MINOT AFB (KMIB)
---------------------------	-------------------------	---	-----------------	------------------

* When ALS inop, increase CAT CDE RVR to 40 and vis to ¾ mile.
 ** When ALS inop, increase CAT CDE vis to 1¼ mile,
 *** Circling not authorized N of Rwy 12-30.



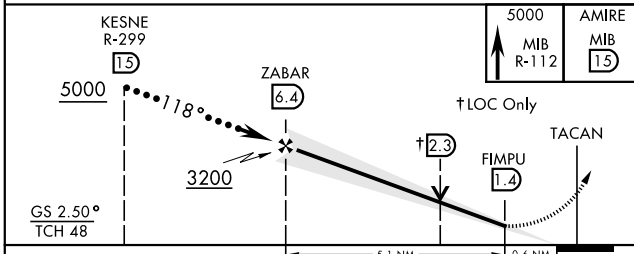
MISSED APPROACH: Climb to 5000 via MIB TACAN R-112 direct AMIRE and hold.

ATIS ★ 278.8	MINOT APP CON 119.6 363.8	MINOT TOWER ★ 120.65 253.5	GND CON 134.0 275.8	CLNC DEL 326.2
------------------------	-------------------------------------	--------------------------------------	-------------------------------	--------------------------



RADAR or DME REQUIRED

EMERG SAFE ALT 100 NM 4700



ELEV 1666	TDZE 1666
118° 5.7 NM from FAF	
HIRL Rwy 12-30	
FAF to MAP 5.1 NM	
Knots	120 140 160 180 200
Min:Sec	2:33 2:11 1:55 1:42 1:32

CATEGORY	C	D	E
S-ILS 12*	1866/24	200	(200-½)
S-LOC 12**	2100/40	434	(500-¾)
CIRCLING ***	2180-1½ 514 (600-1½)	2220-2	554 (600-2)

HI-ILS or LOC Z RWY 12

NC-1, 09 SEP 2021 to 07 OCT 2021

NC-1, 09 SEP 2021 to 07 OCT 2021