

# HI-TACAN Z RWY 12

TACAN MIB Chan <b>96</b>	APCH CRS <b>125°</b>	Rwy Ldg <b>13,198</b> TDZE <b>1666</b> Arprt Elev <b>1666</b>	JAL-5013 [USAF]	MINOT AFB (KMIB)
-----------------------------	-------------------------	---	-----------------	------------------

\* When ALS inop, increase CAT CDE vis to 1 1/2 miles.

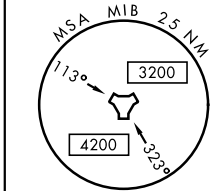
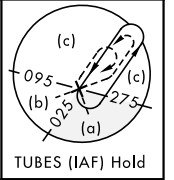
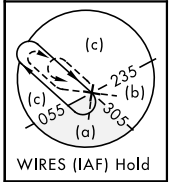
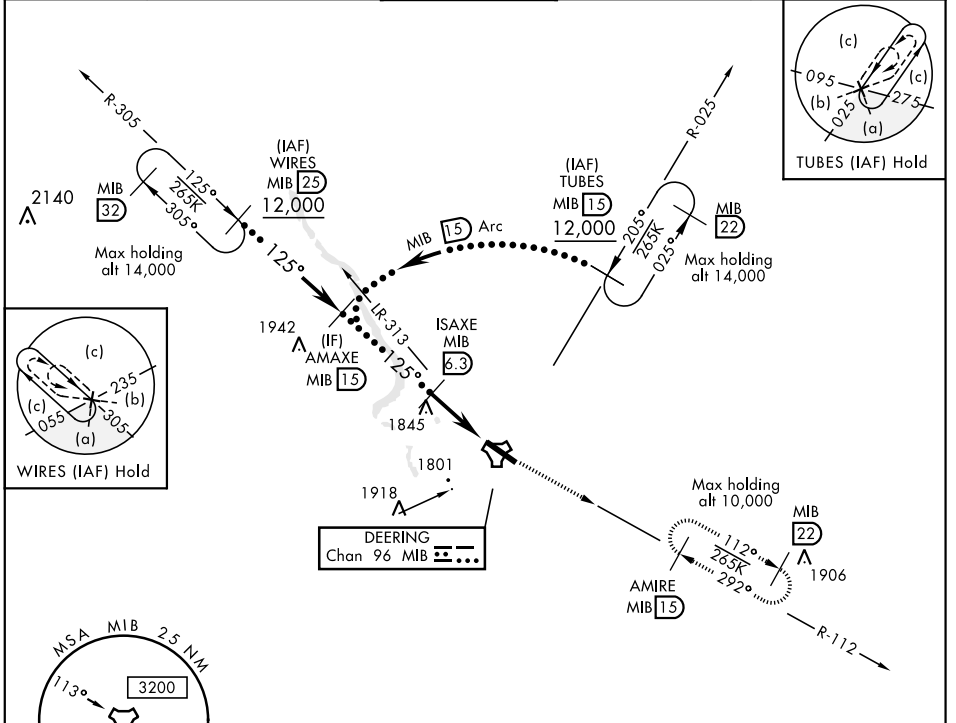
\*\* Circling not authorized N of Rwy 12-30.

ALSF-1

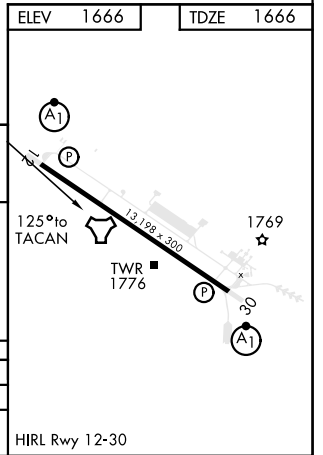
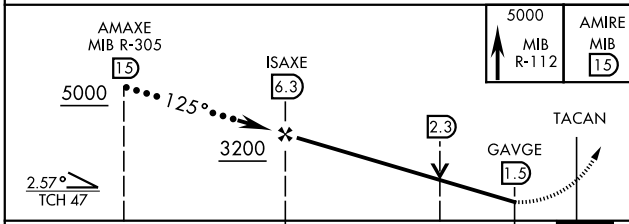


MISSED APPROACH: Climb to 5000 via MIB TACAN R-112 direct AMIRE and hold.

ATIS ★ <b>278.8</b>	MINOT APP CON <b>119.6 363.8</b>	MINOT TOWER ★ <b>120.65 253.5</b>	GND CON <b>134.0 275.8</b>	CLNC DEL <b>326.2</b>
------------------------	-------------------------------------	--------------------------------------	-------------------------------	--------------------------



EMERG SAFE ALT 100 NM 4700



CATEGORY	C	D	E
S-12*	2100/40	434 (500-3/4)	
CIRCLING **	2180-1 1/2 514 (600-1 1/2)	2220-2	554 (600-2)

HIRL Rwy 12-30

# HI-TACAN Z RWY 12

NC-1, 09 SEP 2021 to 07 OCT 2021

NC-1, 09 SEP 2021 to 07 OCT 2021