

MINOT, NORTH DAKOTA

# HI-TACAN Z RWY 30

TACAN MIB Chan <b>96</b>	APCH CRS <b>292°</b>	Rwy ldg <b>13,198</b> TDZE <b>1646</b> Arprt Elev <b>1666</b>
-----------------------------	-------------------------	---

JAL-5013 [USAF]

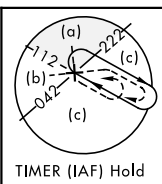
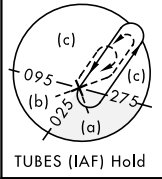
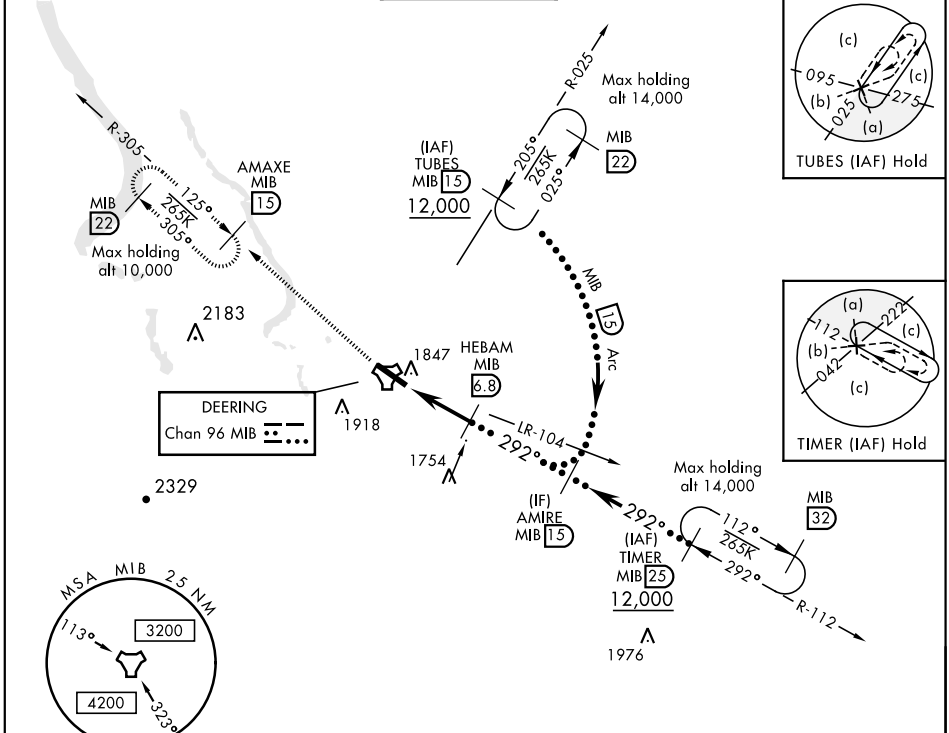
MINOT AFB (KMIB)

\* When ALS inop, increase CAT CDE vis to 1 1/2 miles.  
 \*\* Circling not authorized N of Rwy 12-30.



MISSED APPROACH: Climb to 5000 via  
 MIB TACAN R-305 direct AMAXE and hold.

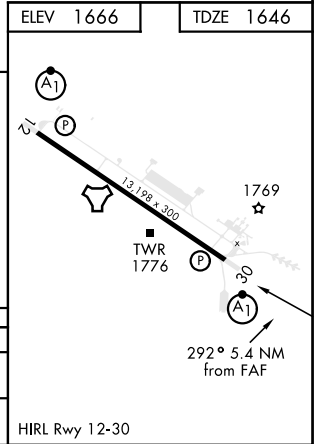
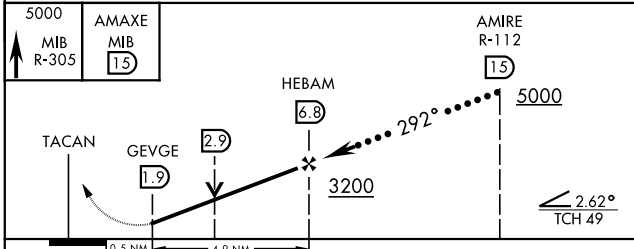
ATIS ★ <b>278.8</b>	MINOT APP CON <b>119.6 363.8</b>	MINOT TOWER ★ <b>120.65 253.5</b>	GND CON <b>134.0 275.8</b>	CLNC DEL <b>326.2</b>
------------------------	-------------------------------------	--------------------------------------	-------------------------------	--------------------------



NC-1, 09 SEP 2021 to 07 OCT 2021

NC-1, 09 SEP 2021 to 07 OCT 2021

EMERG SAFE ALT 100 NM 4700



CATEGORY	C	D	E
S-30 *	2100/45	454 (500-7/8)	
CIRCLING **	2180-1 1/2 514 (600-1 1/2)	2220-2 554 (600-2)	

MINOT, NORTH DAKOTA

48°25'N-101°21'W

MINOT AFB (KMIB)

Orig 21JUL16

# HI-TACAN Z RWY 30