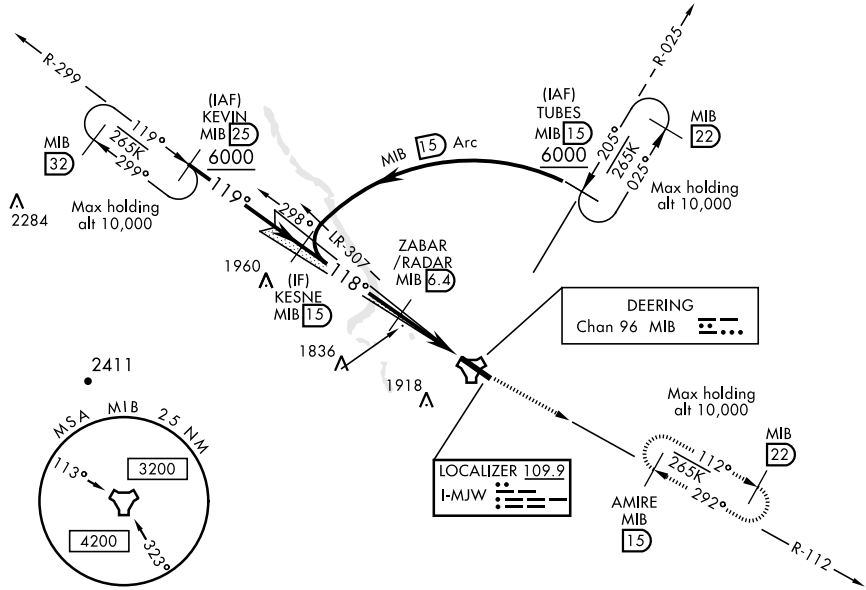


ILS or LOC Y RWY 12

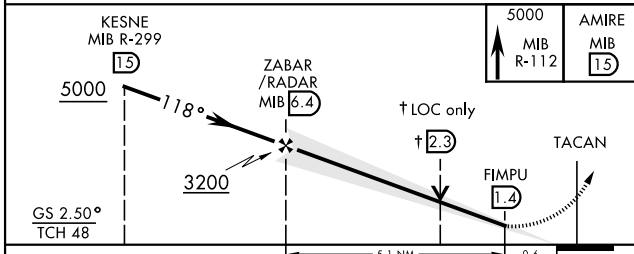
| | | | | |
|--|-------------------------------------|---|-------------------------------|---|
| LOC I-MJW 109.9 | APCH CRS 118° | Rwy Idg 13,198 TDZE 1666 Arprt Elev 1666 | AL-5013 [USAF] | MINOT AFB (KMIB) |
| * When ALS inop, increase RVR to 40 and vis to 3/4 mile. ** When ALS inop, increase CAT AB RVR to 55 and vis to 1 mile, CAT CDE vis to 1 1/4 miles. | | | ALSF-1 | MISSED APPROACH: Climb to 5000 via MIB TACAN R-112 direct AMIRE and hold. |
| ATIS * 278.8 | MINOT APP CON 119.6 363.8 | MINOT TOWER * 120.65 253.5 | GND CON 134.0 275.8 | CLNC DEL 326.2 |

*** Circling not authorized N of Rwy 12-30.



RADAR or DME REQUIRED

EMERG SAFE ALT 100 NM 4700



| | | | | | |
|-------------------------------------|-----------|------|------|------|------|
| ELEV 1666 | TDZE 1666 | | | | |
| 118° 5.7 NM from FAF | | | | | |
| HIRL Rwy 12-30 FAF to MAP 5.1 NM | | | | | |
| Knots | 60 | 90 | 120 | 150 | 180 |
| Min:Sec | 5:06 | 3:24 | 2:33 | 2:02 | 1:42 |

| CATEGORY | A | B | C | D | E |
|-------------|-----------------------|-----------------------|-------------------------------|---------------|-------------|
| S-ILS 12* | 1866/24 | | | | |
| S-LOC 12** | 2100/24 | 434 (500-1/2) | 200 | 434 (200-1/2) | |
| CIRCLING*** | 2120-1 454 (500-1) | 2140-1 474 (500-1) | 2180-1 1/2 514 (600-1 1/2) | 2220-2 | 554 (600-2) |

ILS or LOC Y RWY 12

NC-1, 09 SEP 2021 to 07 OCT 2021

NC-1, 09 SEP 2021 to 07 OCT 2021