

# ILS or LOC Y RWY 30

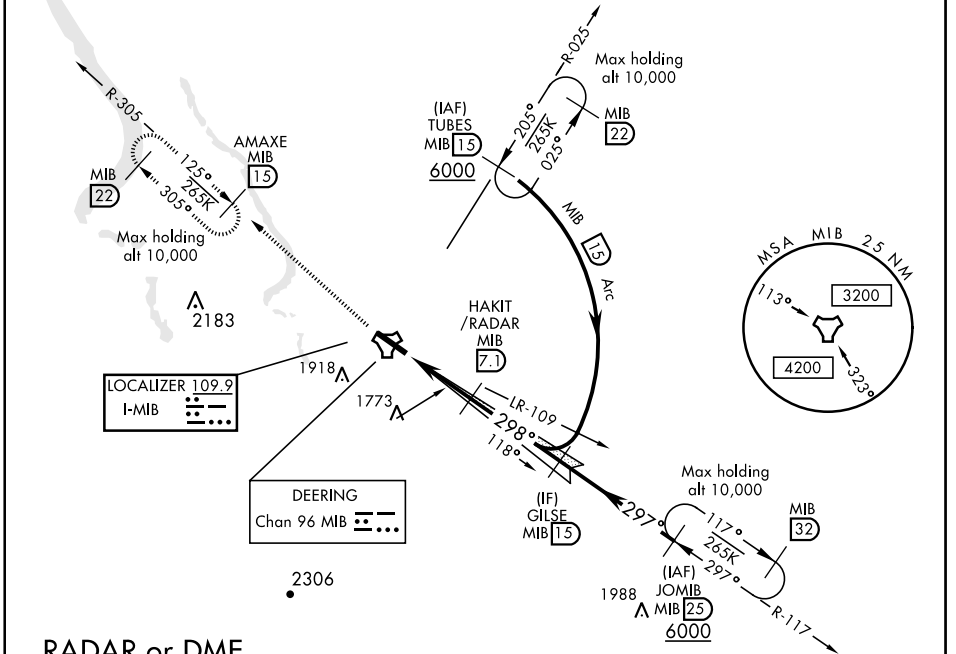
LOC I-MIB <b>109.9</b>	APCH CRS <b>298°</b>	Rwy Ldg <b>13,198</b> TDZE <b>1646</b> Arprt Elev <b>1666</b>	AL-5013 [USAF]	MISSED APPROACH: Climb to 5000 via MIB TACAN R-305 direct AMAXE and hold.
---------------------------	-------------------------	---	----------------	---

\* When ALS inop, increase CAT ABCDE RVR to 40 and vis to 3/4 mile.  
 \*\* When ALS inop, increase CAT AB RVR to 55 and vis to 1 mile, CAT CDE RVR to 60 and vis to 1 1/2 miles.



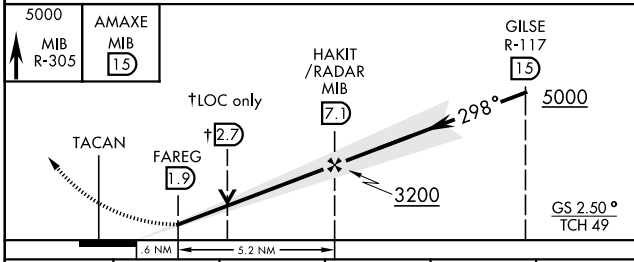
ATIS ★ <b>278.8</b>	MINOT APP CON <b>119.6 363.8</b>	MINOT TOWER ★ <b>120.65 253.5</b>	GND CON <b>134.0 275.8</b>	CLNC DEL <b>326.2</b>
------------------------	-------------------------------------	--------------------------------------	-------------------------------	--------------------------

\*\*\* Circling not authorized N of Rwy 12-30.



## RADAR or DME REQUIRED

EMERG SAFE ALT 100 NM 4700



ELEV 1666	TDZE 1646
HIRL Rwy 12-30	
FAF to MAP 5.2 NM	
Knots	60 90 120 150 180
Min:Sec	5:12 3:28 2:36 2:05 1:44

CATEGORY	A	B	C	D	E
S-ILS 30 *	1846/24		200	(200-1/2)	
S-LOC 30 **	2040/24	394 (400-1/2)	2040/35	394	(400-3/4)
CIRCLING ***	2120-1 454 (500-1)	2140-1 474 (500-1)	2180-1 1/2 514 (600-1 1/2)	2220-2	554 (600-2)

# ILS or LOC Y RWY 30

NC-1, 09 SEP 2021 to 07 OCT 2021

NC-1, 09 SEP 2021 to 07 OCT 2021