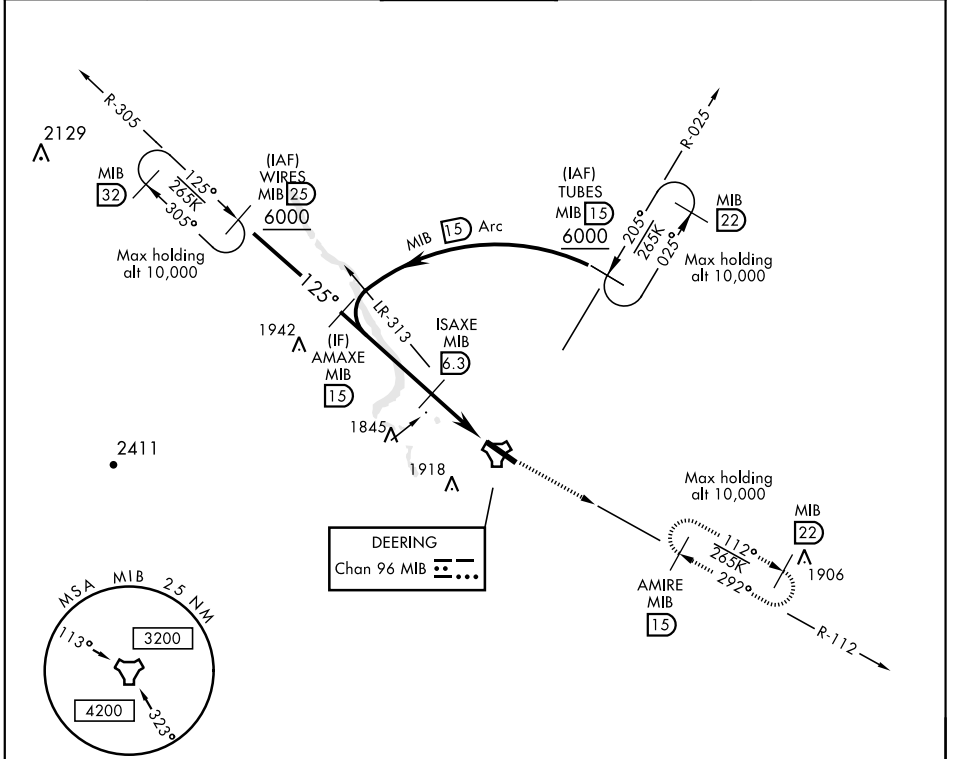


TACAN Y RWY 12

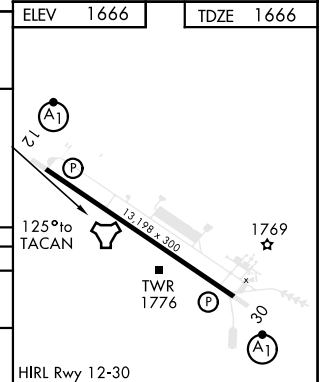
TACAN MIB Chan 96	APCH CRS 125°	Rwy ldg 13,198 TDZE 1666 Arprt Elev 1666	AL-5013 [USAF]	MINOT AFB (KMIB)
* When ALS inop, increase CAT AB RVR to 55 vis to 1 mile, CAT CDE vis to 1 1/4 miles. ** Circling not authorized N of Rwy 12-30.			ALSF-1 	MISSED APPROACH: Climb to 5000 via MIB TACAN R-112 direct AMIRE and hold.

ATIS ★ 278.8	MINOT APP CON 119.6 363.8	MINOT TOWER ★ 120.65 253.5	GND CON 134.0 275.8	CLNC DEL 326.2
------------------------	-------------------------------------	--------------------------------------	-------------------------------	--------------------------



EMERG SAFE ALT 100 NM 4700

AMAXE MIB R-305	ISAXE	5000	AMIRE MIB R-112	ELEV 1666	TDZE 1666
5000	3200	2.3	1.5		
125°	4.8 NM	0.6	TACAN		
2.57° TCH 47					
CATEGORY	A	B	C	D	E
S-12*	2100/24 434 (500-1/2)		2100/40 434 (500-3/4)		
CIRCLING**	2120-1 454 (500-1)	2140-1 474 (500-1)	2180-1 514 (600-1 1/2)	2220-2 554 (600-2)	



TACAN Y RWY 12

NC-1, 09 SEP 2021 to 07 OCT 2021

NC-1, 09 SEP 2021 to 07 OCT 2021