

TACAN Y RWY 30

TACAN MIB Chan 96	APCH CRS 292°	Rwy Ldg TDZE Arprt Elev 13,198 1646 1666
-----------------------------	-------------------------	--

AL-5013 [USAF]

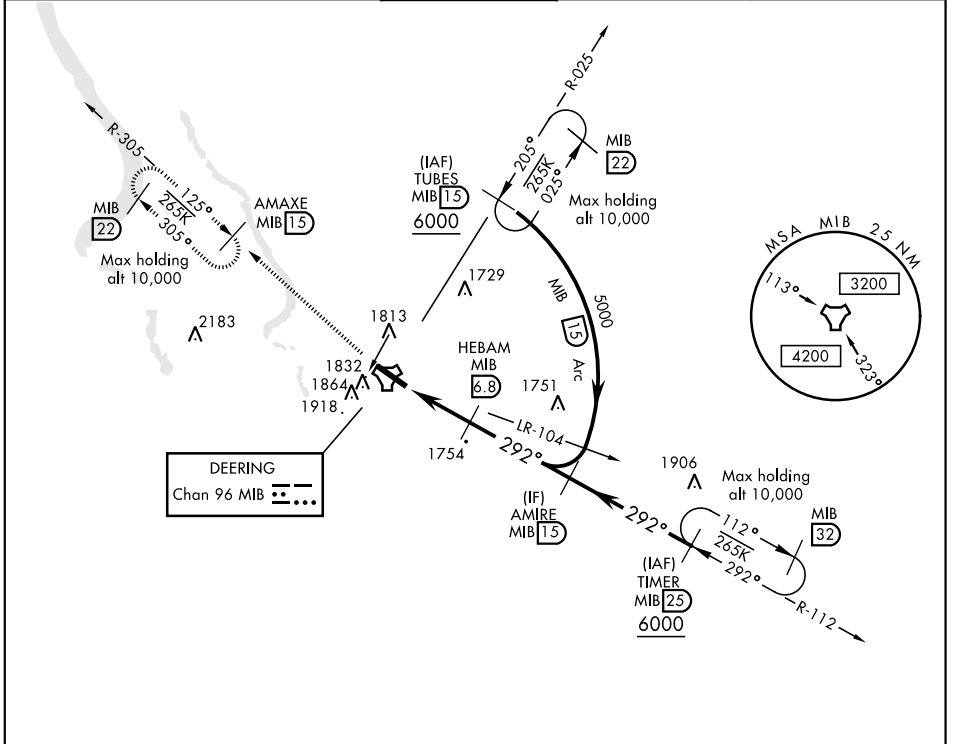
MINOT AFB (KMIB)

* When ALS inop, increase CAT AB RVR to 55 and vis to 1 mile, CAT CDE vis to 1 3/8 miles.
** Circling not authorized N of Rwy 12-30



MISSED APPROACH: Climb to 5000 via MIB TACAN R-305 direct AMAXE and hold.

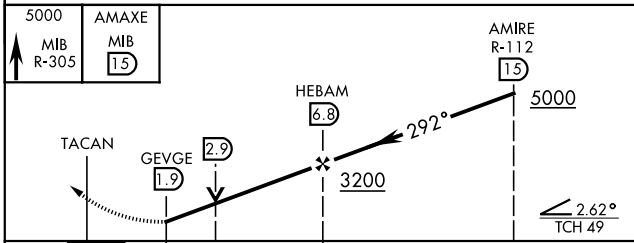
ATIS ★ 278.8	MINOT APP CON 119.6 363.8	MINOT TOWER ★ 120.65 253.5	GND CON 134.0 275.8	CLNC DEL 326.2
------------------------	-------------------------------------	--------------------------------------	-------------------------------	--------------------------



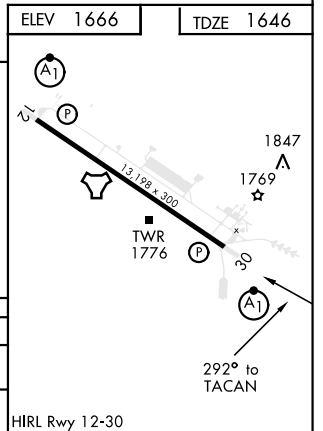
NC-1, 09 SEP 2021 to 07 OCT 2021

NC-1, 09 SEP 2021 to 07 OCT 2021

EMERG SAFE ALT 100 NM 4700



CATEGORY	A	B	C	D	E
S-30 *	2100/24	454 (500-1/2)	2100/45	454	(500-3/4)
CIRCLING **	2120-1 454 (500-1)	2140-1 474 (500-1)	2180-1 1/2 514 (600-1 1/2)	2220-2	554 (600-2)



TACAN Y RWY 30