

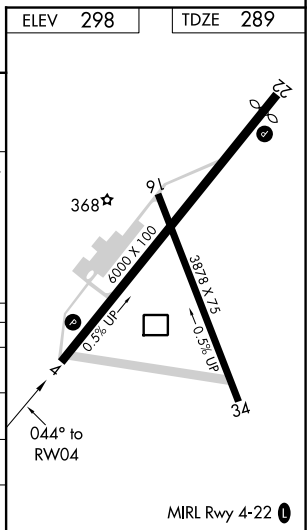
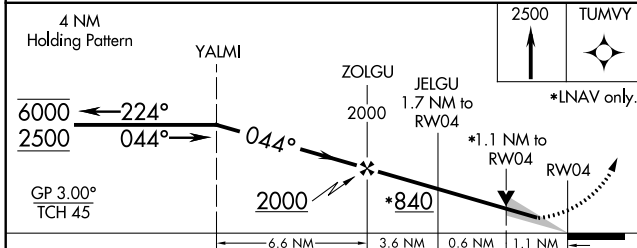
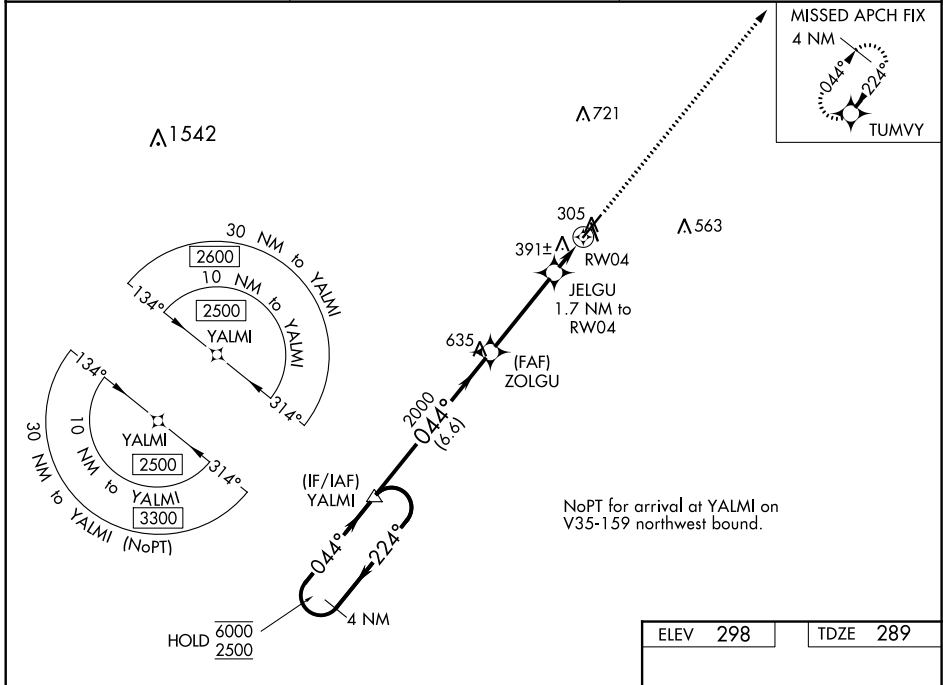
WAAS CH 82603 W04A	APP CRS 044°	Rwy Idg TDZE Apt Elev	6000 289 298
--	------------------------	-----------------------------	---

RNAV (GPS) RWY 4

MOULTRIE MUNI (MGR)

RNP APCH.		MISSED APPROACH: Climb to 2500 direct TUMVY and hold.
<p>⚠ Circling Rwy 16 NA at night. For uncompensated Baro-VNAV systems, LNAV/VNAV NA below -15°C or above 54°C.</p>		

AWOS-3PT 118.925	VALDOSTA APP CON ★ 126.6 285.6	UNICOM 122.8 (CTAF) 0
----------------------------	--	--



CATEGORY	A	B	C	D
LPV DA		539-1	250 (300-1)	
LNNAV/VNAV DA		552-1	263 (300-1)	
LNNAV MDA		660-1	371 (400-1)	
C CIRCLING	720-1 422 (500-1)	760-1 462 (500-1)	860-1½ 562 (600-1½)	1080-2½ 782 (800-2½)

SE-4, 09 SEP 2021 to 07 OCT 2021

SE-4, 09 SEP 2021 to 07 OCT 2021