

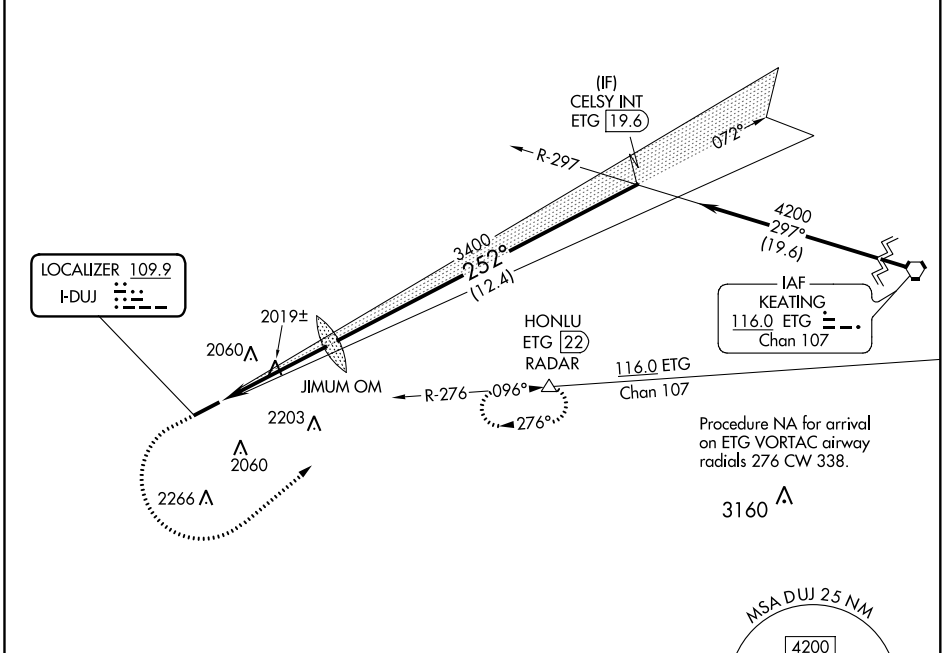
LOC I-DUJ <b>109.9</b>	APP CRS <b>252°</b>	Rwy Idg TDZE Apt Elev	<b>5503</b> <b>1817</b> <b>1817</b>
---------------------------	------------------------	-----------------------------	-------------------------------------------

# ILS or LOC RWY 25

DUBOIS RGNL (DUJ)

<p><b>⚠</b> Circling NA for Cat D south of Rwy 7-25. For inop ALS, increase S-LOC 25 Cats C/D visibility to 1½ SM.</p>	<p>MALSR</p>	<p>MISSED APPROACH: Climb to 2900 then climbing left turn to 4200 on heading 060° and ETG VORTAC R-276 to HONLU/ETG 22 DME/RADAR and hold.</p>

ASOS <b>119.025</b>	CLEVELAND CENTER <b>126.725 291.65</b>	UNICOM <b>123.0 (CTAF) 0</b>
------------------------	-------------------------------------------	---------------------------------



NE-4, 09 SEP 2021 to 07 OCT 2021

NE-4, 09 SEP 2021 to 07 OCT 2021

ELEV 1817	<b>D</b>	TDZE 1817
-----------	----------	-----------



2900	4200	ETG R-276	HONLU	JIMUM OM	CELSY INT ETG 19.8
↑	hdg 060°		△	3352	
4.6 NM		12.4 NM		4200	
				GS 3.00°	TCH 57

HIRL Rwy 7-25 <b>0</b>	REIL Rwy 7 <b>0</b>				
FAF to MAP 4.6 NM					
Knots	60	90	120	150	180
Min:Sec	4:36	3:04	2:18	1:50	1:32

CATEGORY	A	B	C	D
S-ILS 25	2017-½		200 (200-½)	
S-LOC 25	2280-½ 463 (500-½)		2280-1 463 (500-1)	
<b>C</b> CIRCLING	2320-1 503 (600-1)	2360-1 543 (600-1)	2380-1½ 563 (600-1½)	2400-2 583 (600-2)