

WAAS CH <b>99413</b> <b>W18A</b>	APP CRS <b>179°</b>	Rwy Idg <b>6508</b> TDZE <b>8</b> Apt Elev <b>9</b>
--	------------------------	---

# RNAV (GPS) RWY 18

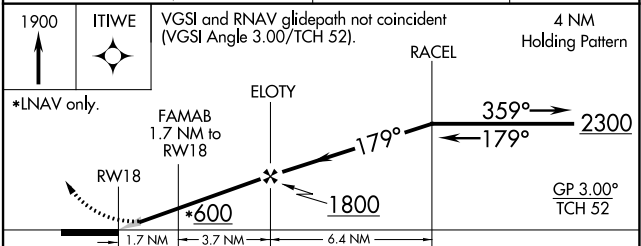
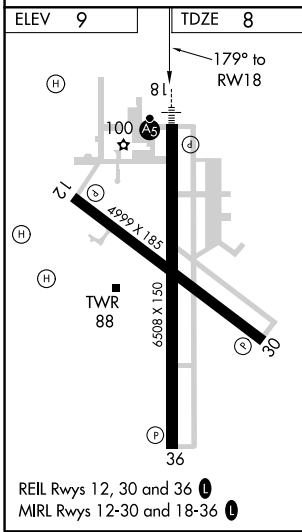
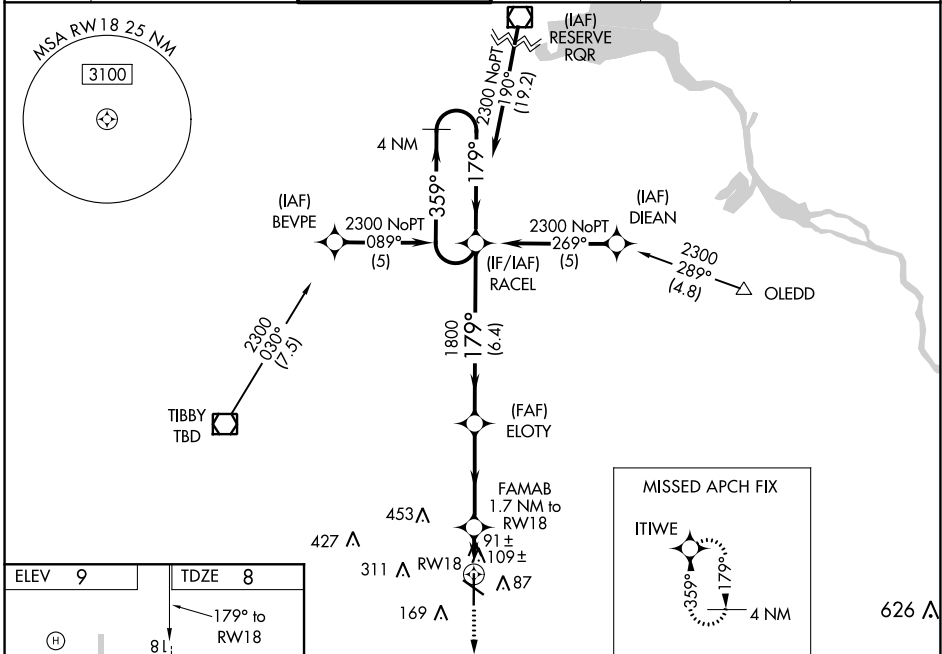
HOUMA-TERREBONNE (HUM)

**⚠** Baro-VNAV NA when using Louis Armstrong New Orleans Intl altimeter setting. For uncompensated Baro-VNAV systems, LNAV/VNAV NA below -15°C (5°F) or above 49°C (120°F). DME/DME RNP-0.3 NA. When local altimeter setting not received, use Louis Armstrong New Orleans Intl altimeter setting: increase LPV DA to 285, increase LNAV/VNAV DA to 526 and all visibilities 1/8 SM; increase all MDAs 80 feet and visibility Cats C and D 1/4 SM. For inop ALS when using Louis Armstrong New Orleans Intl altimeter setting increase all LPV visibilities to 7/8 SM, increase all LNAV/VNAV visibilities and LNAV Cats C and D visibility to 1 1/8 SM.

**MALSR**

**MISSED APPROACH:**  
Climb to 1900 direct ITIWE and hold.

ATIS <b>120.25</b>	NEW ORLEANS APP CON <b>118.9 350.35</b>	HOUMA TOWER ★ <b>125.3 (CTAF) 346.3</b>	GND CON <b>123.875</b>	CLNC DEL <b>118.9</b> (When twr closed)	UNICOM <b>122.95</b>
-----------------------	--	--	---------------------------	---	-------------------------



CATEGORY	A	B	C	D
LPV DA		208-1/2	200 (200-1/2)	
LNAV/VNAV DA		449-7/8	441 (500-7/8)	
LNAV MDA	440-1/2	432 (500-1/2)	440-3/4	432 (500-3/4)
<b>C</b> CIRCLING	480-1	471 (500-1)	760-2 1/4 751 (800-2 1/4)	760-2 1/2 751 (800-2 1/2)

SC-4, 09 SEP 2021 to 07 OCT 2021

SC-4, 09 SEP 2021 to 07 OCT 2021