

WAAS CH 61013 W30A	APP CRS 304°	Rwy Idg 4999 TDZE 9 Apt Elev 9
--	------------------------	---

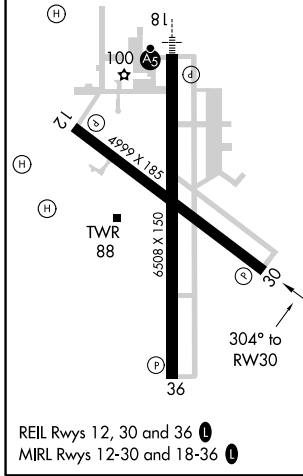
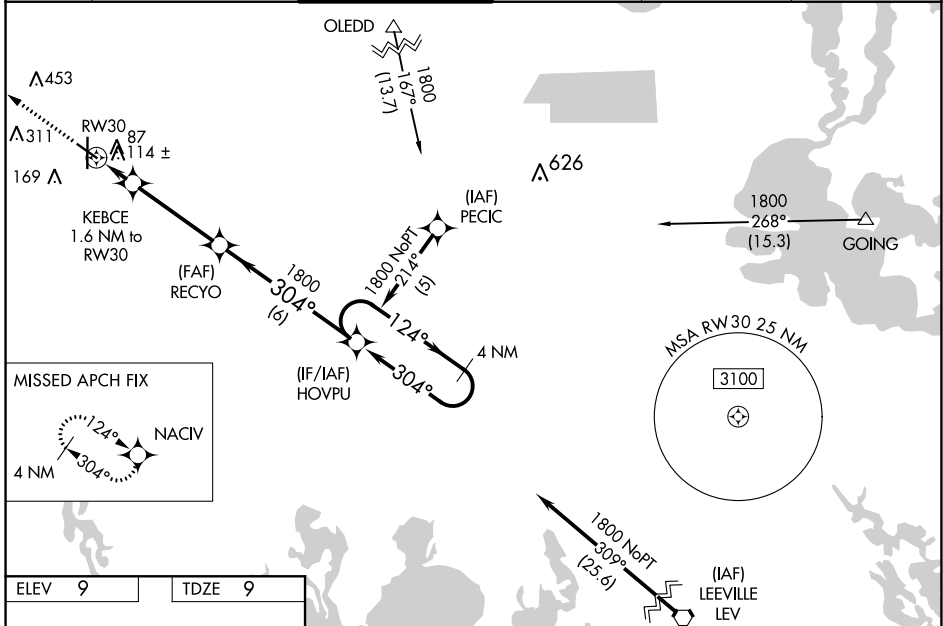
RNAV (GPS) RWY 30

HOUMA-TERREBONNE (HUM)

▼ For uncompensated Baro-VNAV systems, LNAV/VNAV NA below -15°C (5°F) or above 49°C (120°F). DME/DME RNP-0.3 NA. Visibility reduction by helicopters NA.
▲ When local altimeter setting not received, use Louis Armstrong New Orleans Intl altimeter setting: increase LPV DA to 336, LNAV/VNAV DA to 489, and all visibilities ¼ SM; increase all MDAs 80 feet and visibility Cats C and D ½ SM. Baro-VNAV NA when using Louis Armstrong New Orleans Intl altimeter setting.

MISSED APPROACH: Climb to 1800 direct NACIV and hold.

ATIS 120.25	NEW ORLEANS APP CON 118.9 350.35	HOUMA TOWER ★ 125.3 (CTAF) 0 346.3	GND CON 123.875	CLNC DEL 118.9 (When twr closed)	UNICOM 122.95
-----------------------	--	--	---------------------------	---	-------------------------



ELEV 9	TDZE 9	1800 NACIV		VGSI and RNAV glidepath not coincident (VGSI Angle 3.00/TCH 39).	4 NM Holding Pattern
* LNAV only		KEBCE 1.6 NM to RW30	RECYO	HOVPU	
RW30		*560	304°	1800	124° → 1800
		1.6 NM	3.8 NM	6 NM	← 304°
					GP 3.00° TCH 45
CATEGORY	A	B	C	D	
LPV DA	259-¾		250 (300-¾)		
LNAV/VNAV DA	412-1⅛		403 (500-1⅛)		
LNAV MDA	380-1		371 (400-1)		
C CIRCLING	480-1	471 (500-1)	760-2¼	751 (800-2¼)	760-2½
			751 (800-2½)		

SC-4, 09 SEP 2021 to 07 OCT 2021

SC-4, 09 SEP 2021 to 07 OCT 2021