

VOR/DME TBD <b>112.0</b> Chan 57	APP CRS <b>302°</b>	Rwy Idg TDZE Apt Elev	<b>4999</b> <b>9</b> <b>9</b>
--	------------------------	-----------------------------	-------------------------------------

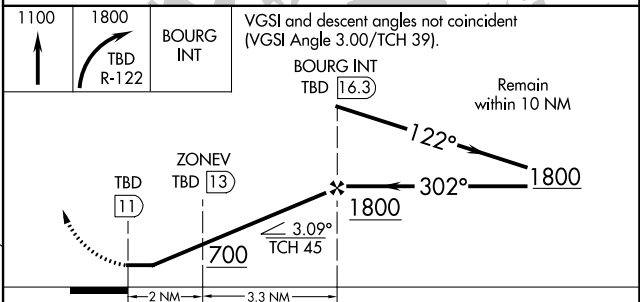
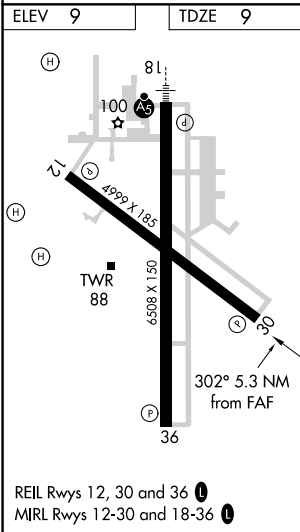
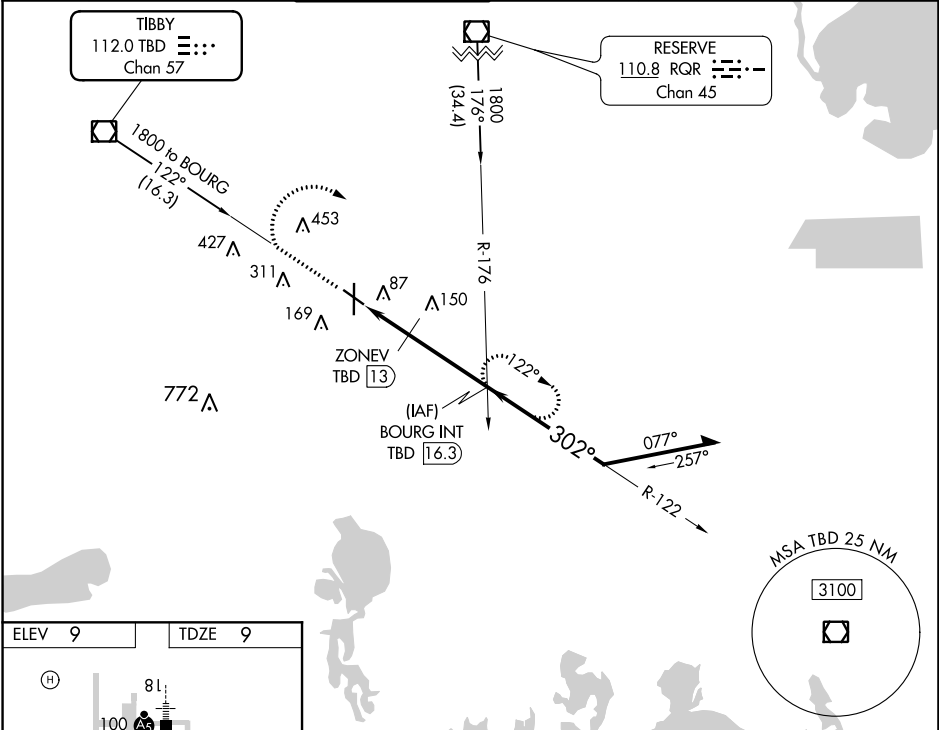
# VOR/DME RWY 30

HOUMA-TERREBONNE (HUM)

**⚠** Visibility reduction by helicopters NA. When local altimeter setting not received, use Louis Armstrong New Orleans Intl altimeter setting and increase all MDAs 80 feet, and visibility Cats C and D 1/2 SM.

**MISSED APPROACH:** Climb to 1100 then climbing right turn to 1800 via TBD VOR/DME R-122 to BOURG INT/TBD 16.3 DME and hold.

ATIS <b>120.25</b>	NEW ORLEANS APP CON <b>118.9 350.35</b>	HOUMA TOWER ★ <b>125.3 (CTAF) 346.3</b>	GND CON <b>123.875</b>	CLNC DEL <b>118.9</b> (When twr closed)	UNICOM <b>122.95</b>
-----------------------	--	--	---------------------------	---	-------------------------



CATEGORY	A	B	C	D
S-30	400-1	391 (400-1)	400-1½	391 (400-1½)
<b>C</b> CIRCLING	480-1	471 (500-1)	760-2¼ 751 (800-2¼)	760-2½ 751 (800-2½)

SC-4, 09 SEP 2021 to 07 OCT 2021

SC-4, 09 SEP 2021 to 07 OCT 2021