

WAAS CH <b>65911</b> <b>W26A</b>	APP CRS <b>256°</b>	Rwy Idg TDZE Apt Elev	<b>5418</b> <b>1871</b> <b>1881</b>
--	------------------------	-----------------------------	---

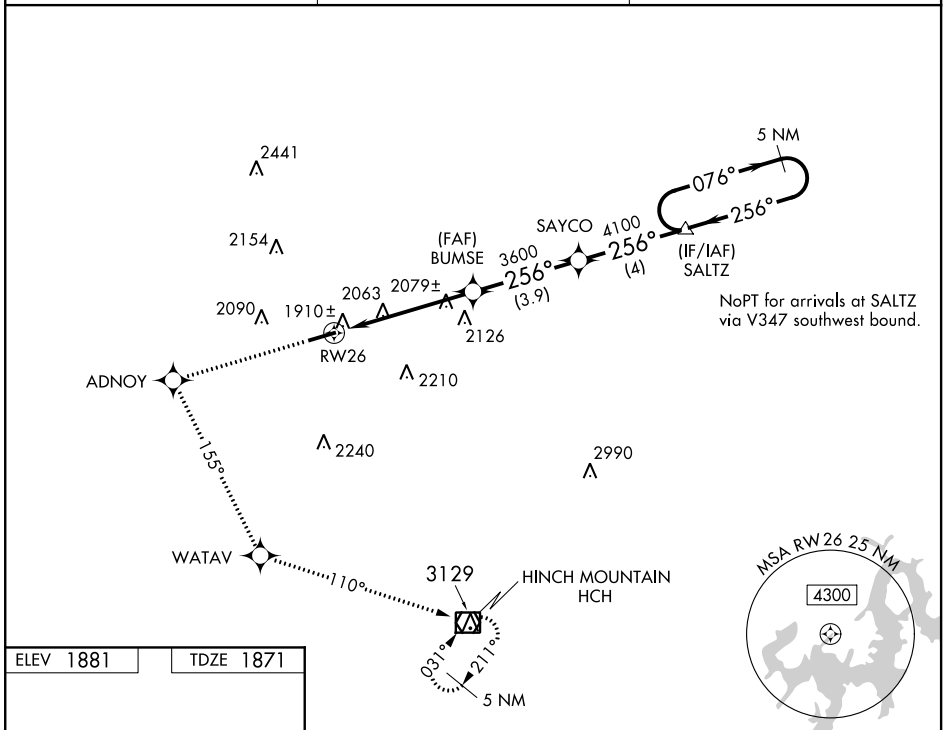
# RNAV (GPS) RWY 26

CROSSVILLE MEML-WHITSON FLD (CSV)

For uncompensated Baro-VNAV systems, LNAV/VNAV NA below -18°C (0°F) or above 45°C (113°F). DME/DME RNP-0.3 NA.

MISSED APPROACH: Climb to 5000 direct ADNOY and left turn on track 155° to WATAV and on track 110° to HCH VOR/DME and hold.

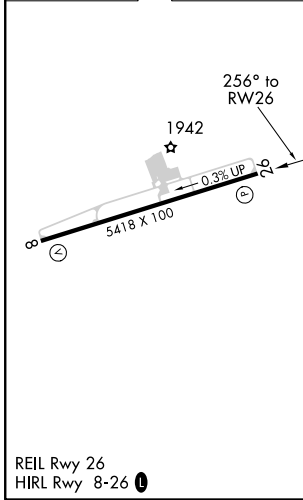
ASOS <b>120.625</b>	ATLANTA CENTER <b>133.6 254.3</b>	UNICOM <b>122.7 (CTAF)</b>
------------------------	--------------------------------------	-------------------------------



SE-1, 09 SEP 2021 to 07 OCT 2021

SE-1, 09 SEP 2021 to 07 OCT 2021

ELEV 1881	TDZE 1871
-----------	-----------



5000	ADNOY	WATAV	HCH	SALTZ	5 NM Holding Pattern
↑	✧	tr 155°	✧	tr 110°	□
*LNAV only.					
RW26		BUMSE 3600	SAYCO 4100	SALTZ 4700	GP 3.00° TCH 60
*1.3 NM to RWY26		VGSi and RNAV glidepath not coincident (VGSi Angle 3.00/TCH 52).			
1.3 NM		3.9 NM		4 NM	
CATEGORY	A	B	C	D	
LPV DA	2071-3/4		200 (200-3/4)		
LNAV/VNAV DA	2170-1		299 (300-1)		
LNAV MDA	2440-1	569 (600-1)		2440-1 1/2	569 (600-1 1/2)
CIRCLING	2440-1	559 (600-1)		2440-1 1/2	2540-2 639 (700-2)