

(BARI2.BARII) 19227

# BARII TWO DEPARTURE (RNAV)

AL-5052 (FAA)

OAKLAND COUNTY INTL (PTK)

PONTIAC, MICHIGAN

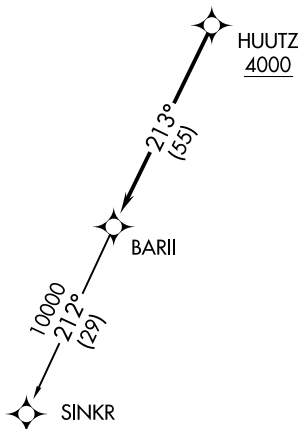
**TOP ALTITUDE:  
ASSIGNED BY ATC**

ATIS  
 125.025  
 CLNC DEL  
 118.25  
 GND CON  
 121.9  
 PONTIAC TOWER \*  
 120.5 (CTAF)  
 DETROIT DEP CON  
 132.35 284.0



TAKEOFF MINIMUMS:

Rwy's 9L/R, 27L/R: Standard.  
 Rwy's 18, 36: NA-Environmental.



NOTE: RNAV 1.  
 NOTE: RADAR required.  
 NOTE: DME/DME/IRU or GPS required.  
 NOTE: Turbojet departures at/above 10000, maintain 280K until advised by ATC.

NOTE: Chart not to scale.

## DEPARTURE ROUTE DESCRIPTION

TAKEOFF RUNWAYS 9L/R: Climb on heading 095° or as assigned for RADAR vectors to cross HUUTZ at or above 4000, thence....

TAKEOFF RUNWAYS 27L/R: Climb on heading 275° or as assigned for RADAR vectors to cross HUUTZ at or above 4000, thence....

...on track 213° to BARII, then on (transition). Maintain ATC assigned altitude, expect filed altitude 10 minutes after departure.

SINKR TRANSITION (BARI2.SINKR):

# BARII TWO DEPARTURE (RNAV)

(BARI2.BARII) 15AUG19

PONTIAC, MICHIGAN  
 OAKLAND COUNTY INTL (PTK)

EC-1, 09 SEP 2021 to 07 OCT 2021

EC-1, 09 SEP 2021 to 07 OCT 2021