

EC-1, 09 SEP 2021 to 07 OCT 2021

**TOP ALTITUDE:
ASSIGNED BY ATC**



- NOTE: RNAV 1.
- NOTE: RADAR required.
- NOTE: DME/DME/IRU or GPS required.
- NOTE: Turbojet departures at/above 10000, maintain 280K until advised by ATC.

TAKEOFF MINIMUMS:

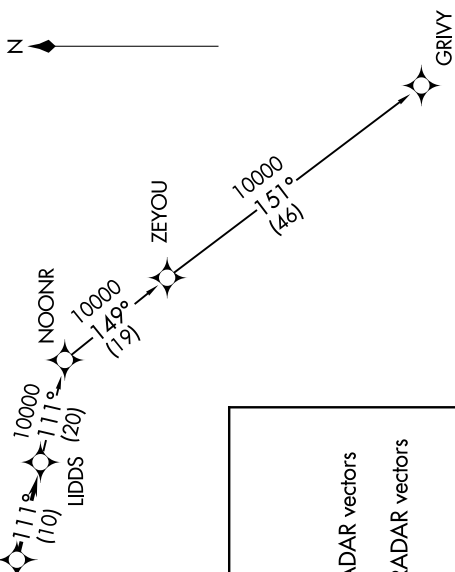
Rwys 9L/R, 27L/R: Standard.
 Rwys 18, 36: NA-Environmental.

DEPARTURE ROUTE DESCRIPTION

TAKEOFF RUNWAYS 9L/R: Climb on heading 095° or as assigned for RADAR vectors to cross KZLOV between 4000 and 15000, thence....
TAKEOFF RUNWAYS 27L/R: Climb on heading 275° or as assigned for RADAR vectors to cross KZLOV between 4000 and 15000, thence....
on track 111° to LIDDS, then on (transition). Maintain ATC assigned altitude, expect filed altitude 10 minutes after departure.

GRIVY TRANSITION (LIDDS2.GRIVY):

- ATIS 125.025
- CLNC DEL 118.25
- GND CON 121.9
- PONTIAC TOWER ★ 120.5 (CTAF)
- DETROIT DEP CON 132.35 284.0



NOTE: Chart not to scale.

EC-1, 09 SEP 2021 to 07 OCT 2021