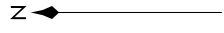
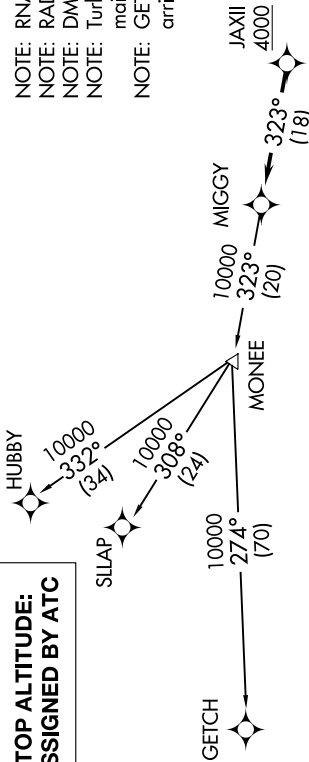


ATIS
125.025
CLNC DEL
118.25
GND CON
121.9
PONTIAC TOWER *
120.5 (CTAF)
DETROIT DEP CON
132.35 284.0

NOTE: RNAV 1.
NOTE: RADAR required.
NOTE: DME/DME/IRU or GPS required.
NOTE: Turbojet departures at/above 10000, maintain 280K until advised by ATC.
NOTE: GETCH TRANSITION: For use by KMKC area arrivals only, or as assigned by ATC.

TAKEOFF MINIMUMS:
Rwys 9L/R, 27L/R: Standard
Rwys 18, 36: NA-Environmental.

NOTE: Chart not to scale.



DEPARTURE ROUTE DESCRIPTION

TAKEOFF RUNWAYS 9L/R: Climb on heading 095° or as assigned for RADAR vectors to cross JAXII at or above 4000, thence....
 TAKEOFF RUNWAYS 27L/R: Climb on heading 275° or as assigned for RADAR vectors to cross JAXII at or above 4000, thence....
on track 323° to MIGGY, then on (transition). Maintain ATC assigned altitude, expect filed altitude 10 minutes after departure.

GETCH TRANSITION (MIGGY2.GETCH):
HUBBY TRANSITION (MIGGY2.HUBBY):
SILAP TRANSITION (MIGGY2.SILAP):