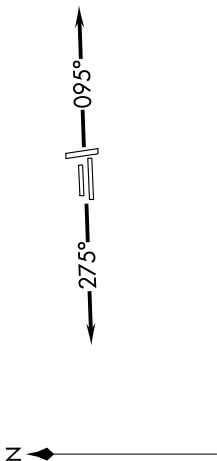


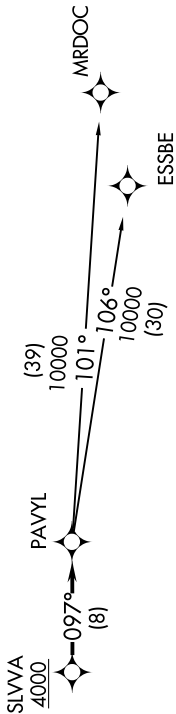
EC-1, 09 SEP 2021 to 07 OCT 2021

**TOP ALTITUDE:
ASSIGNED BY ATC**



NOTE: RNAV 1.
 NOTE: RADAR required.
 NOTE: DME/DME/IRU or GPS required.
 NOTE: Turboplet departures at/above 10000, maintain 280K until advised by ATC.

ATIS
 125.025
 CLNC DEL
 118.25
 GND CON
 121.9
 PONTIAC TOWER *
 120.5 (CTAF)
 DETROIT DEP CON
 132.35 284.0



TAKEOFF MINIMUMS:
 Rwy 9L/R, 27L/R: Standard.
 Rwy 18, 36: NA-Environmental.

NOTE: Chart not to scale.

DEPARTURE ROUTE DESCRIPTION

TAKEOFF RUNWAYS 9L/R: Climb on heading 095° or as assigned for RADAR vectors to cross SLVVA at or above 4000, thence....
TAKEOFF RUNWAYS 27L/R: Climb on heading 275° or as assigned for RADAR vectors to cross SLVVA at or above 4000, thence....
on track 097° to PAVYL, then on (transition). Maintain ATC assigned altitude, expect filed altitude 10 minutes after departure.
ESSBE TRANSITION (PAVYL2.ESSBE):
MRDOC TRANSITION (PAVYL2.MRDOC):

EC-1, 09 SEP 2021 to 07 OCT 2021