

WAAS CH 90415 W09A	APP CRS 095°	Rwy Idg TDZE Apt Elev	6520 981 981
--	------------------------	-----------------------------	---

RNAV (GPS) RWY 9R

OAKLAND COUNTY INTL (PTK)

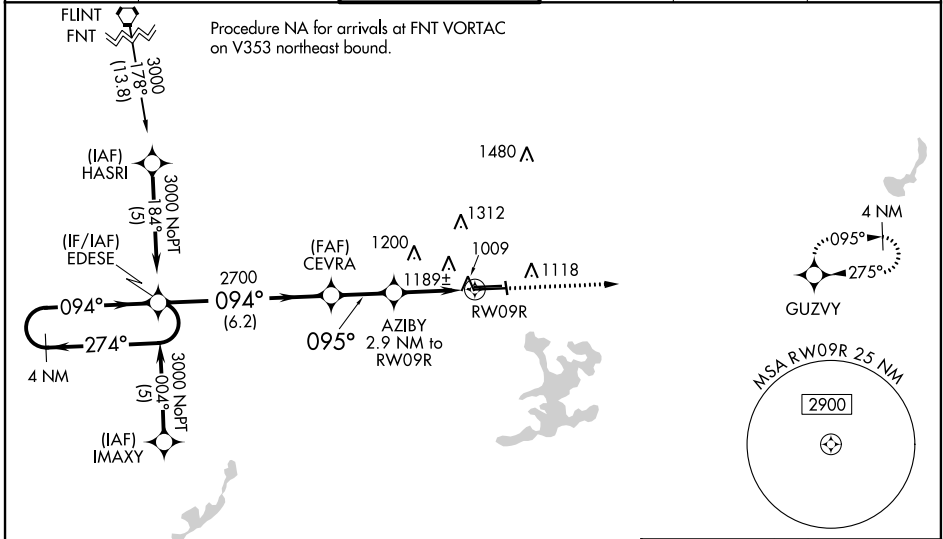
RNP APCH.

▼ For uncompensated Baro-VNAV systems, LNAV/VNAV NA below -16°C (4°F) or above 47°C (111°F). Baro-VNAV and VDP NA when using Coleman A Young altimeter setting. Circling Rwy 9L, 36 NA at night. When local altimeter setting not received, use Coleman A Young Muni altimeter setting and increase LPV DA to 1286 feet, LNAV/VNAV DA to 1685 feet and all MDA 120 feet, increase LNAV/VNAV all Cats visibility to 2 SM, increase LNAV Cat C visibility to RVR 5000, Cat D visibility to RVR 6000, and Circling Cat C/D visibility ½ SM. For inop MALSRL increase LNAV Cats A/B visibility to RVR 5000. For inop MALSRL when using Coleman A Young Muni altimeter setting; increase LPV all Cats, and LNAV Cats A/B visibility to RVR 5000. # RVR 1800 authorized with use of FD or AP or HUD to DA, NA when using Coleman A Young Muni altimeter setting.



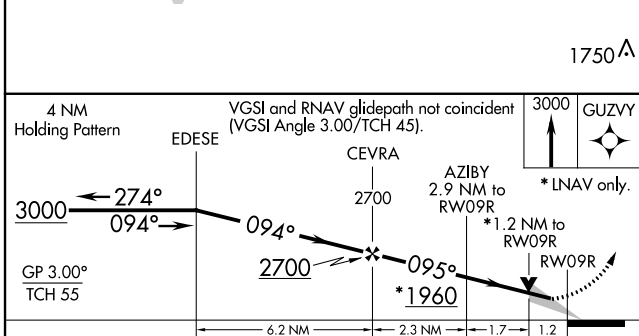
MISSED APPROACH:
Climb to 3000 direct
GUZVY and hold.

ATIS 125.025	DETROIT APP CON 132.35 284.0	PONTIAC TOWER * 120.5 (CTAF)	GND CON 121.9	CLNC DEL 118.25	UNICOM 122.95
------------------------	--	--	-------------------------	---------------------------	-------------------------



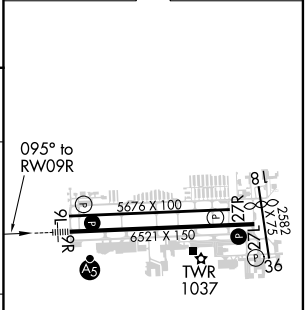
EC-1, 09 SEP 2021 to 07 OCT 2021

EC-1, 09 SEP 2021 to 07 OCT 2021



ELEV 981	D	TDZE 981
----------	----------	----------

CATEGORY	A	B	C	D
LPV DA		1181/24	200 (200-½)	
LNAV/VNAV DA		1580-1½	599 (600-1½)	
LNAV MDA	1420/40	439 (500-¾)		1420/50 439 (500-1)
C CIRCLING	1500-1 519 (600-1)	1540-1 559 (600-1)	1640-1¾ 659 (700-1¾)	1640-2 659 (700-2)



HIRL Rwy 9R-27L **1**

MIRL Rwy 9L-27R

REIL Rwy 27L **1**

REIL Rws 9L and 27R