

LOC/DME I-VSF <b>111.3</b> Chan <b>50</b>	APP CRS <b>051°</b>	Rwy ldg TDZE Apt Elev	<b>5501</b> <b>575</b> <b>578</b>
---	------------------------	-----------------------------	---

# LOC RWY 5

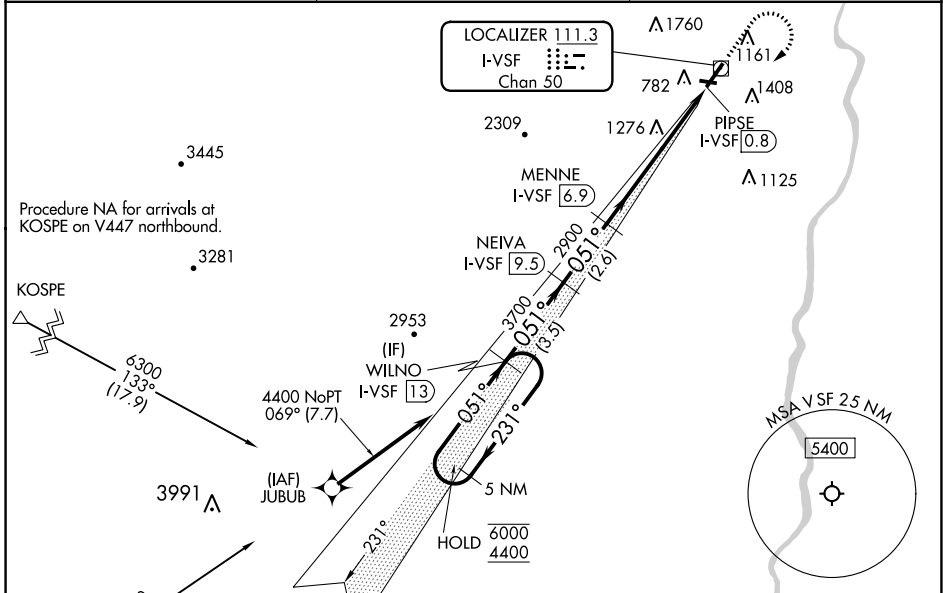
HARTNESS STATE (SPRINGFIELD) (V'SF')

DME required.  
RNAV 1-GPS required.

**NA**  
Rwy 5 helicopter visibility reduction below 3/4 SM NA.  
Circling to Rwy 11, 23, 29 NA at night.

MISSED APPROACH: Climb to 2000 then climbing right turn to 4400 direct WILNO/13 DME and hold.

ASOS <b>121.425</b>	BOSTON CENTER <b>134.7 381.4</b>	UNICOM <b>122.8</b> (CTAF) <b>1</b>
------------------------	-------------------------------------	--

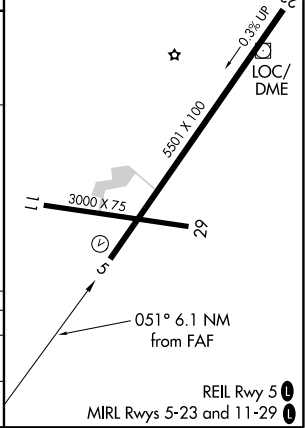
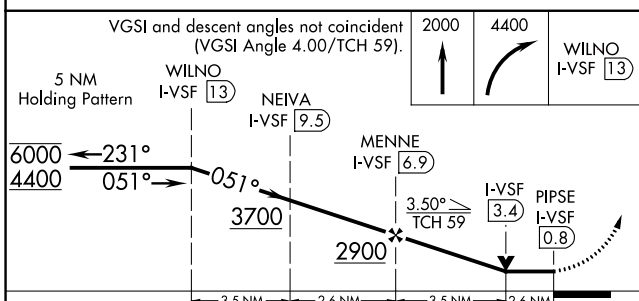


NE-1, 09 SEP 2021 to 07 OCT 2021

NE-1, 09 SEP 2021 to 07 OCT 2021



ELEV 578	TDZE 575
----------	----------



CATEGORY	A	B	C	D
S-5	1760-1¼ 1185 (1200-1¼)	1760-1½ 1185 (1200-1½)	1760-3	1185 (1200-3)
CIRCLING	1760-1¼ 1182 (1200-1¼)	1760-1½ 1182 (1200-1½)	2600-3	2022 (2100-3)