

HI-TACAN X RWY 32L

TACAN NLC Chan 80	APCH CRS 322°	Rwy ldg TDZE Arprt Elev 13,501 227 228
-----------------------------	-------------------------	--

AL-5067 [USN]

LEMOORE NAS (REEVES FIELD) (KNLC)

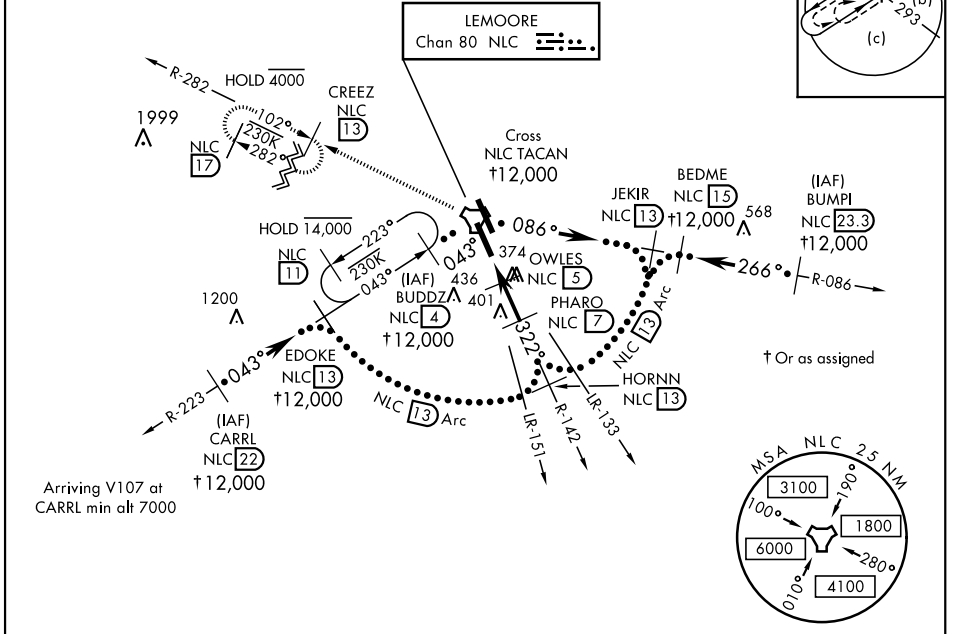
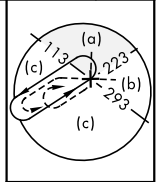
▽ * When ALS inop, increase CAT CDE RVR to 55 and vis to 1 mile.



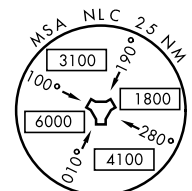
MISSED APPROACH: Climb to 3000 via R-142 to NLC TACAN, then via R-282 to CREEZ and hold.

ATIS★ 121.575 327.15	LEMOORE APP CON 124.1N 118.15 S 269.025	LEMOORE TOWER★ 128.3 340.2	GND CON 121.65 305.2	CLNC DEL 124.1 371.9	ASR/ PAR
--------------------------------	---	--------------------------------------	--------------------------------	--------------------------------	-------------

Simultaneous approach authorized.



† Or as assigned

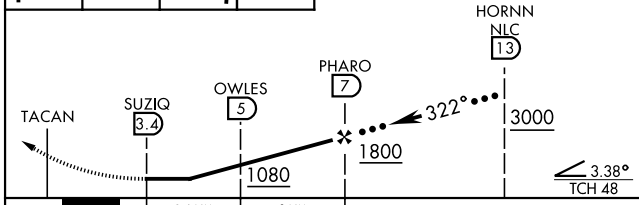


Arriving V107 at CARRL min alt 7000

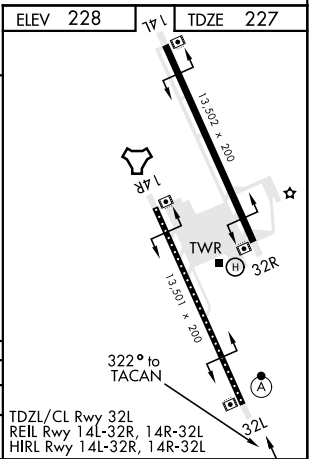
SW-2, 09 SEP 2021 to 07 OCT 2021

SW-2, 09 SEP 2021 to 07 OCT 2021

EMERG SAFE ALT 100 NM 16,500



CATEGORY	C	D	E
S-32L *	580/30	353 (400-5%)	
CIRCLING	700-1½ 472 (500-1½)	780-2 552 (600-2)	



TDZL/CL Rwy 32L
REIL Rwy 14L-32R, 14R-32L
HIRL Rwy 14L-32R, 14R-32L

HI-TACAN X RWY 32L