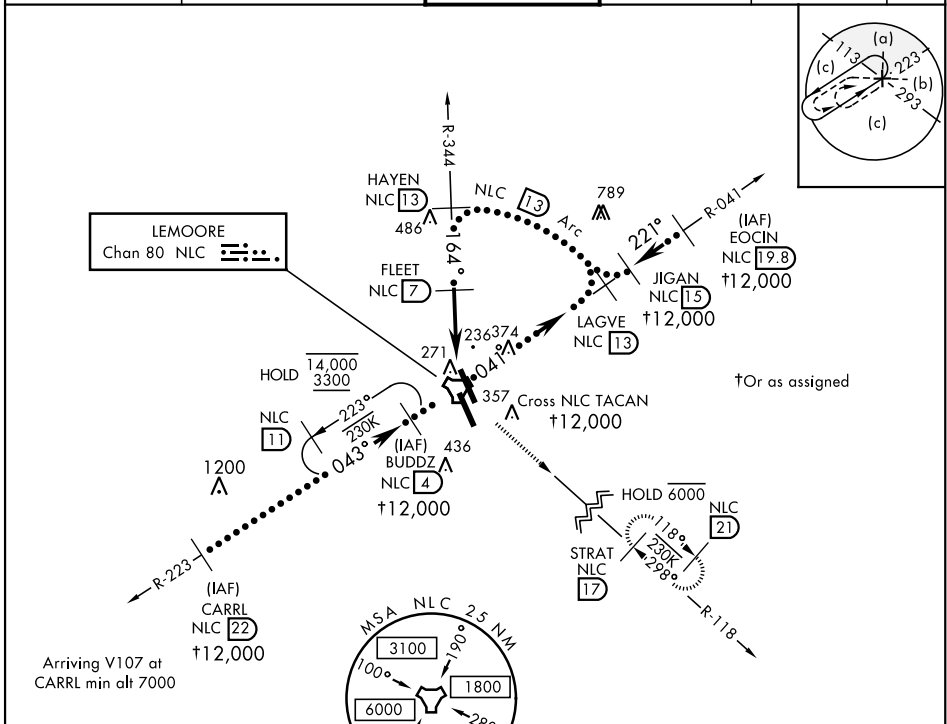


HI-TACAN Z RWY 14L

TACAN NLC Chan 80	APCH CRS 164°	Rwy ldg 13,502 TDZE 219 Arpt Elev 228	AL-5067 [USN]	LEMOORE NAS (REEVES FIELD) (KNLC)
-----------------------------	-------------------------	--	---------------	-----------------------------------

MISSED APPROACH: Climb to 700 then climbing left turn to 2000 via heading 142°, intercept NLC R-118 to STRAT and hold.

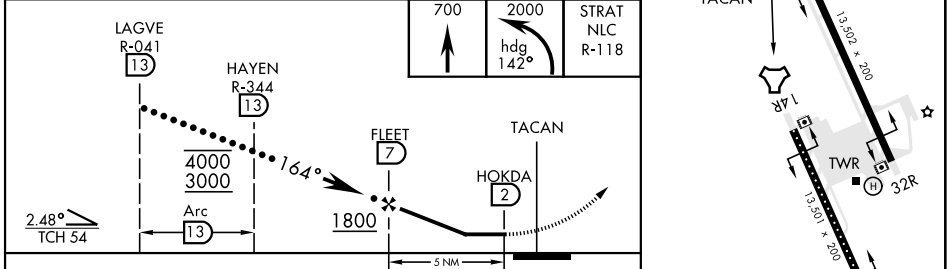
ATIS★ 121.575 327.15	LEMOORE APP CON 124.1N 118.15 S 269.025	LEMOORE TOWER ★ 128.3 340.2	GND CON 121.65 305.2	CLNC DEL 124.1 371.9	ASR/PAR
--------------------------------	---	---------------------------------------	--------------------------------	--------------------------------	---------



SW-2, 09 SEP 2021 to 07 OCT 2021

SW-2, 09 SEP 2021 to 07 OCT 2021

ELEV 228	TDZE 219
----------	----------



CATEGORY	C	D	E
S-14L	560/55	341	(400-1)
CIRCLING	700-1½ 452 (500-1½)	780-2	552 (600-2)

HI-TACAN Z RWY 14L