

HI-TACAN Z RWY 14R

TACAN NLC Chan 80	APCH CRS 142°	Rwy ldg 13,501 TDZE 228 Arprt Elev 228
-----------------------------	-------------------------	---

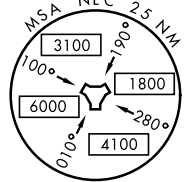
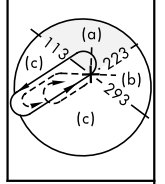
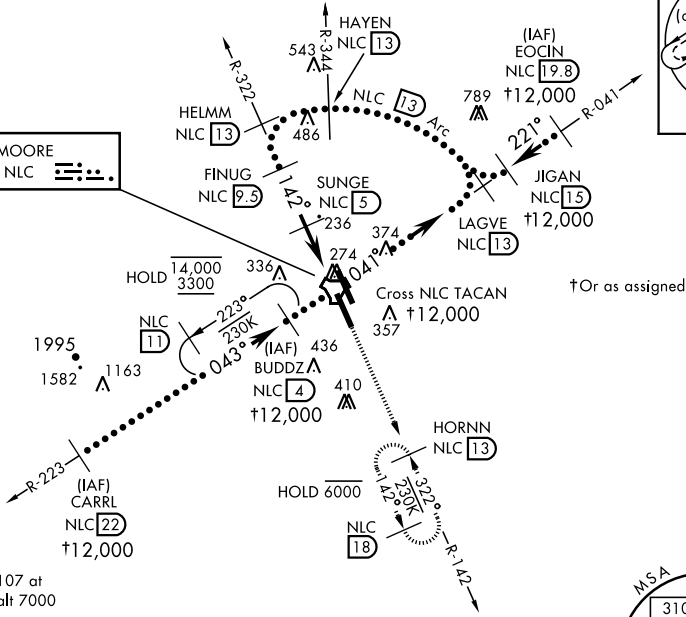
AL-5067 [USN]

LEMOORE NAS (REEVES FIELD) (KNLC)

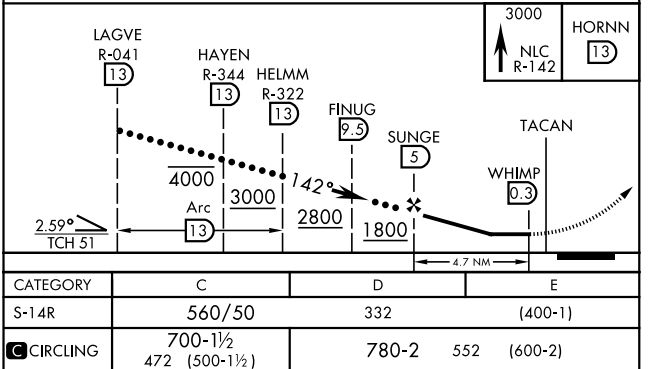
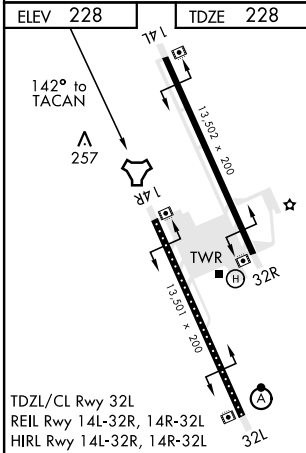
MISSED APPROACH: Climb to 3000 via R-142 to HORNN and hold.

ATIS★ 121.575 327.15	LEMOORE APP CON 124.1N 118.15 S 269.025	LEMOORE TOWER ★ 128.3 340.2	GND CON 121.65 305.2	CLNC DEL 124.1 371.9	ASR/ PAR
--------------------------------	---	---------------------------------------	--------------------------------	--------------------------------	-------------

Simultaneous approaches authorized.



EMERG SAFE ALT 100 NM 16,500



HI-TACAN Z RWY 14R

SW-2, 09 SEP 2021 to 07 OCT 2021

SW-2, 09 SEP 2021 to 07 OCT 2021