

# RNAV (GPS) RWY 14L

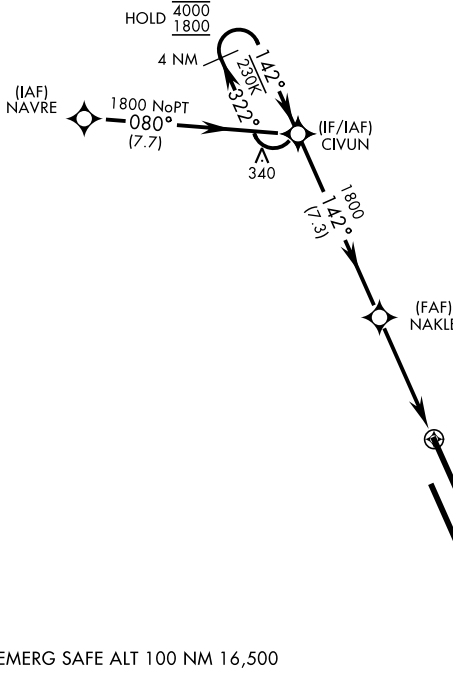
WAAS Chan <b>70209</b> <b>W14A</b>	APCH CRS <b>142°</b>	Rwy Idg <b>13,502</b> TDZE <b>219</b> Arprt Elev <b>228</b>
--	-------------------------	---

AL-5067 [USN]

LEMOORE NAS (REEVES FIELD) (KNLC)

<p><b>▽</b> DME/DME RNP-0.3 NA</p>		<p>MISSED APPROACH: Climb to 1200, then climb left turn to 2000 direct STRAT and hold.</p>			
------------------------------------	--	--	--	--	--

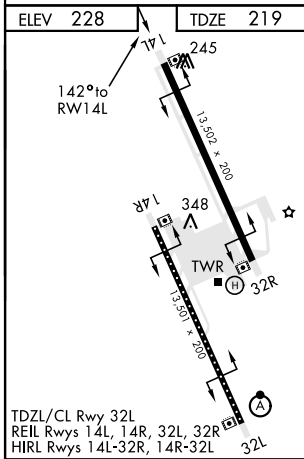
<p>ATIS ★ <b>121.575 327.15</b></p>	<p>LEMOORE APP CON <b>124.1N 118.15S 269.025</b></p>	<p>LEMOORE TOWER ★ <b>128.3 340.2</b></p>	<p>GND CON <b>121.65 305.2</b></p>	<p>CLNC DEL <b>124.1 371.9</b></p>	<p>ASR/PAR</p>
---	--	---	--	--	----------------



Simultaneous approaches authorized.  
 LNAV procedure NA during Simultaneous operations.  
 Use of FD or AP providing RNAV track guidance required during simultaneous operations.

For uncompensated Baro-VNAV systems, LNAV/VNAV procedure NA below -15°C(5°F) and above 54°C(129°F).

EMERG SAFE ALT 100 NM 16,500



ELEV 228	TDZE 219				
<p>142° to RWY 14L</p> <p>13.502 x 200</p> <p>1.48</p> <p>348</p> <p>TWR</p> <p>32R</p> <p>32L</p> <p>13.502 x 200</p>		<p>CIVUN</p> <p>4000 1800</p> <p>322°</p> <p>142°</p> <p>142°</p> <p>1800</p>		<p>NAKLE</p> <p>1200</p> <p>2000</p> <p>STRAT</p> <p>0.8 NM to RWY 14L</p> <p>RWY 14L</p> <p>4.8 NM</p>	
<p>GP 3.00°</p> <p>TCH 54</p>		<p>M.S.A. RWY 14L 2.5 NM</p> <p>6000</p>			
CATEGORY	A	B	C	D	
LPV DA	419/40	200	(200-34)		
LNAV/VNAV DA	469/40	250	(300-34)		
LNAV MDA	520/55	301	(300-1)		
<b>C</b> CIRCLING	680-1	452 (500-1)	680-1½ 452 (500-1½)	780-2 552 (600-2)	

# RNAV (GPS) RWY 14L

SW-2, 09 SEP 2021 to 07 OCT 2021

SW-2, 09 SEP 2021 to 07 OCT 2021