

RNAV (GPS) RWY 14R

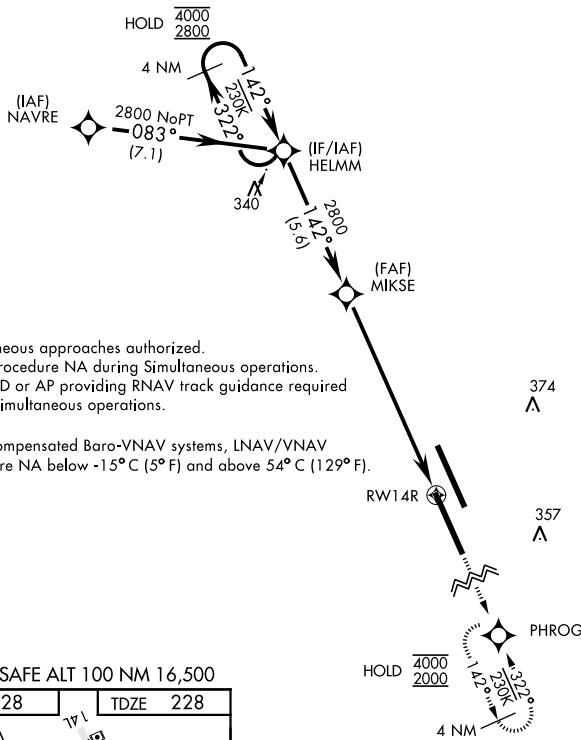
WAAS Chan 80286 W14B	APCH CRS 142°	Rwy Idg 13,501 TDZE 228 Arpt Elev 228
--	-------------------------	--

AL-5067 [USN]

LEMOORE NAS (REEVES FIELD) (KNLC)

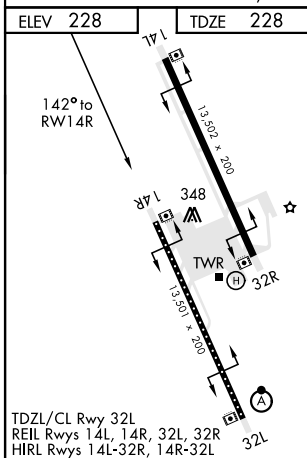
▽ DME/DME RNP-0.3 NA	MISSED APPROACH: Climb to 1200, then climbing right turn to 2000 direct PHROG and hold.
-----------------------------	---

ATIS ★ 121.575 327.15	LEMOORE APP CON 124.1N 118.15S 269.025	LEMOORE TOWER ★ 128.3 340.2	GND CON 121.65 305.2	CLNC DEL 124.1 371.9	ASR/PAR
---------------------------------	--	---------------------------------------	--------------------------------	--------------------------------	---------



Simultaneous approaches authorized.
LNAV procedure NA during Simultaneous operations.
Use of FD or AP providing RNAV track guidance required during simultaneous operations.
For uncompensated Baro-VNAV systems, LNAV/VNAV procedure NA below -15° C (5° F) and above 54° C (129° F).

EMERG SAFE ALT 100 NM 16,500



TDZL/CL Rwy 32L
REIL Rwy 14L, 14R, 32L, 32R
HIRL Rwy 14L-32R, 14R-32L

ELEV 228	TDZE 228	<table border="1"> <tr> <td>1200</td> <td>2000</td> <td>PHROG</td> </tr> </table>				1200	2000	PHROG				
1200	2000	PHROG										
GP 3.00°	TCH 51	HELMM	MIKSE	RWY14R								
<table border="1"> <tr> <td>4000</td> <td>2800</td> <td>322°</td> <td>142°</td> <td>142°</td> <td>1.3 NM to RWY14R</td> </tr> </table>		4000	2800	322°	142°	142°	1.3 NM to RWY14R	<table border="1"> <tr> <td>7.9 NM</td> </tr> </table>				7.9 NM
4000	2800	322°	142°	142°	1.3 NM to RWY14R							
7.9 NM												
CATEGORY	A	B	C	D								
LPV DA		428/40	200	(200-34)								
LNAV/VNAV DA		483/40	255	(300-34)								
LNAV MDA	680/55	452	(500-1)	680-1 $\frac{3}{8}$	452 (500-1 $\frac{3}{8}$)							
C CIRCLING	680-1	452	(500-1)	700-1 $\frac{1}{2}$	780-2							
				472 (500-1 $\frac{1}{2}$)	552 (600-2)							

RNAV (GPS) RWY 14R

SW-2, 09 SEP 2021 to 07 OCT 2021

SW-2, 09 SEP 2021 to 07 OCT 2021