

RNAV (GPS) RWY 32L

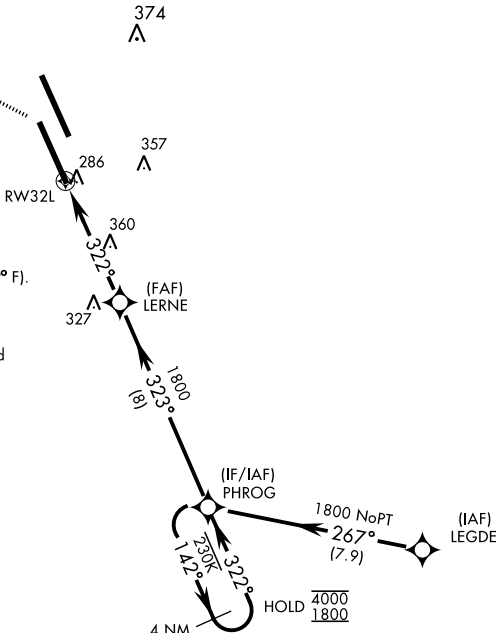
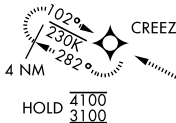
WAAS Chan 50085 W32A	APCH CRS 322°	Rwy Idg 13,501 TDZE 227 Arpt Elev 228
--	-------------------------	--

AL-5067 [USN]

LEMOORE NAS (REEVES FIELD) (KNLC)

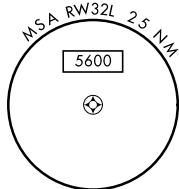
<p>▼ *When TDZL/CL inop, increase RVR to 24. When ALS inop, increase RVR to 40, vis to 3/4 mile. **When ALS inop, increase CAT AB RVR to 55, vis to 1 mile; CAT CD vis to 1/4 miles.</p>	<p>ALSF-2</p>	<p>MISSED APPROACH: Climb to 1000, then climbing left turn to 3100 direct CREEZ and hold.</p>
	<p>ATIS ★ 121.575 327.15 LEMOORE APP CON 124.1N 118.15S 269.025 LEMOORE TOWER ★ 128.3 340.2 GND CON 121.65 305.2 CLNC DEL 124.1 371.9 ASR/PAR</p>	

DME/DME RNP-0.3 NA



For uncompensated Baro-VNAV systems, LNAV/VNAV procedure NA below -15° C (5° F) and above 54° C (129° F).

Simultaneous approaches authorized.
LNAV procedure NA during Simultaneous operations.
Use of FD or AP providing RNAV track guidance required during simultaneous operations.



EMERG SAFE ALT 100 NM 16,500

ELEV 228	TDZE 227				
		<p>LERNE PHROG</p> <p>1.2 NM from RW32L</p> <p>322° 323° 142°</p> <p>1800 4000 1800</p> <p>GP 3.00° TCH 48</p>			
CATEGORY	A	B	C	D	
LPV DA *	427/18				200 (200-1/2)
LNAV/VNAV DA *	477/24		250 (300-1/2)		482/24 255 (300-1/2)
LNAV MDA**	660/24 433 (500-1/2)		660/40 433 (500-3/4)		
CIRCLING	680-1 452 (500-1)		700-1 1/2 472 (500-1/2)		780-2 552 (600-2)

LEMOORE, CALIFORNIA
Amdt 5 17JUN21

36°20'N-119°57'W

LEMOORE NAS (REEVES FIELD) (KNLC)

RNAV (GPS) RWY 32L

SW-2, 09 SEP 2021 to 07 OCT 2021

SW-2, 09 SEP 2021 to 07 OCT 2021