

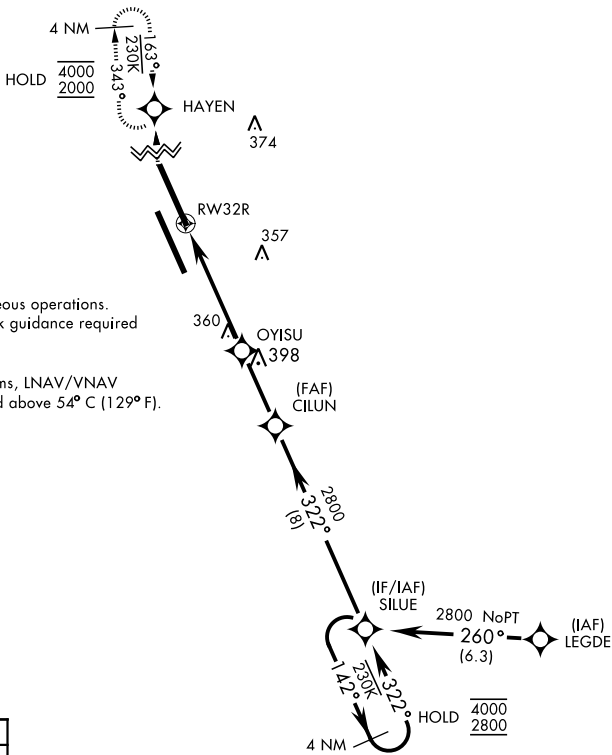
RNAV (GPS) RWY 32R

WAAS Chan 60335 W32B	APCH CRS 322°	Rwy ldg 13,502 TDZE 221 Arpt Elev 228
--	-------------------------	--

AL-5067 [USN]

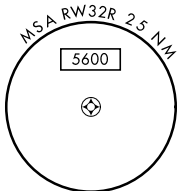
LEMOORE NAS (REEVES FIELD) (KNLC)

DME/DME RNP-0.3 NA		MISSED APPROACH: Climb to 1200, then climbing right turn to 2000 direct HAYEN and hold.			
ATIS ★ 121.575 327.15	LEMOORE APP CON 124.1N 118.15S 269.025	LEMOORE TOWER ★ 128.3 340.2	GND CON 121.65 305.2	CLNC DEL 124.1 371.9	ASR/PAR



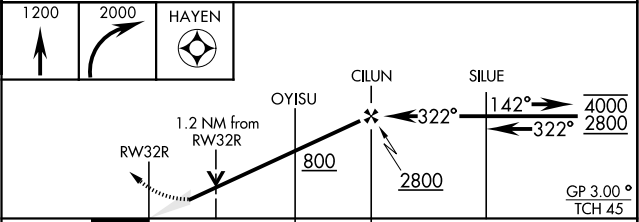
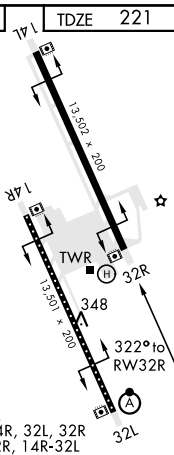
Simultaneous approaches authorized.
LNAV procedure NA during Simultaneous operations.
Use of FD or AP providing RNAV track guidance required during simultaneous operations.

For uncompensated Baro-VNAV systems, LNAV/VNAV procedure NA below -15°C (5° F) and above 54° C (129° F).



EMER SAFE ALT 100 NM 16,500

ELEV 228	TDZE 221
----------	----------



CATEGORY	A	B	C	D
LPV DA	421/40		200 (200-¾)	
LNAV/VNAV DA	511/45 290 (300-7/8)	522/45 301 (300-7/8)	532/45 309 (400-7/8)	541/45 320 (400-7/8)
LNAV MDA	660/55	439 (500-1)	660-1¼	439 (500-1¼)
CIRCLING	680-1	452 (500-1)	700-1½ 472 (500-1½)	780-2 552 (600-2)

RNAV (GPS) RWY 32R

SW-2, 09 SEP 2021 to 07 OCT 2021

SW-2, 09 SEP 2021 to 07 OCT 2021