

TACAN Y RWY 14L

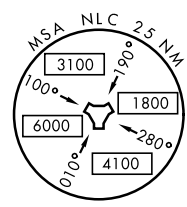
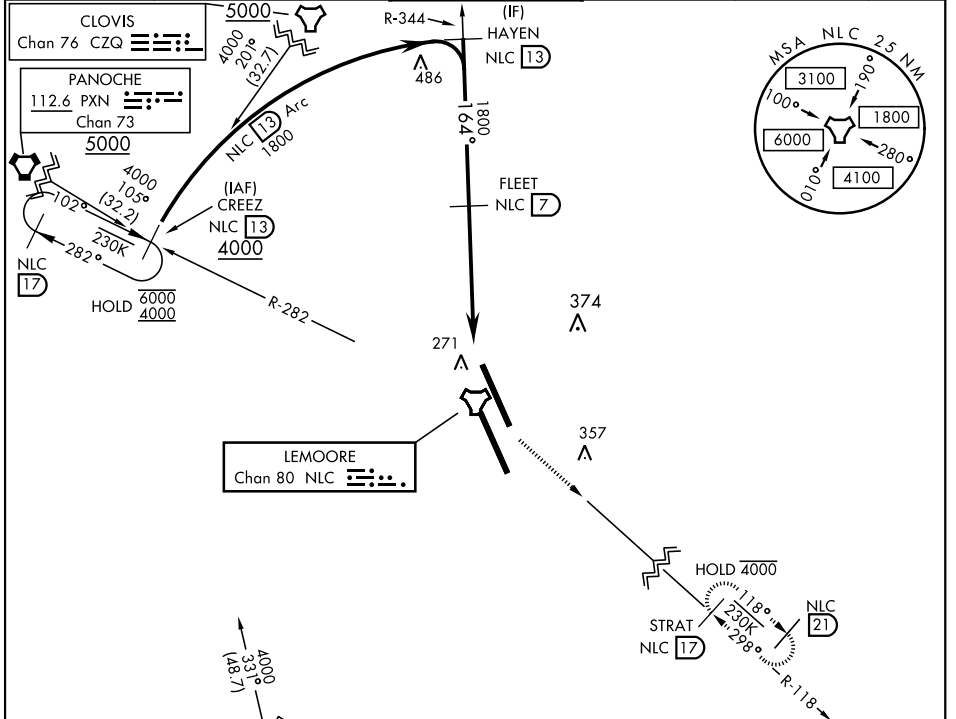
TACAN NLC Chan 80	APCH CRS 164°	Rwy Ldg 13,502 TDZE 219 Arprt Elev 228
----------------------	------------------	--

AL-5067 [USN]

LEMOORE NAS (REEVES FIELD) (KNLC)

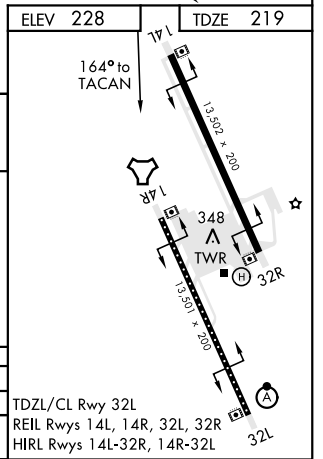
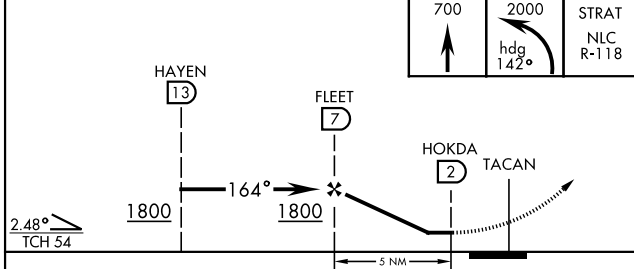
MISSED APPROACH: Climb to 700 then climbing left turn to 2000 via heading 142°, intercept NLC TACAN R-118 to STRAT and hold.

ATIS★ 121.575 327.15	LEMOORE APP CON 124.1N 118.15S 269.025	LEMOORE TOWER★ 128.3 340.2	GND CON 121.65 305.2	CLNC DEL 124.1 371.9	ASR/PAR
-------------------------	---	-------------------------------	-------------------------	-------------------------	---------



ELEV 228	TDZE 219
----------	----------

EMERG SAFE ALT 100 NM 16,500



CATEGORY	A	B	C	D
S-14L	560/55	341	(400-1)	
CRCLING	680-1 452 (500-1)		700-1½ 472 (500-1½)	780-2 552 (600-2)

TDZL/CL Rwy 32L
REIL Rwys 14L, 14R, 32L, 32R
HIRL Rwys 14L-32R, 14R-32L

TACAN Y RWY 14L

SW-2, 09 SEP 2021 to 07 OCT 2021

SW-2, 09 SEP 2021 to 07 OCT 2021