

TACAN Y RWY 32L

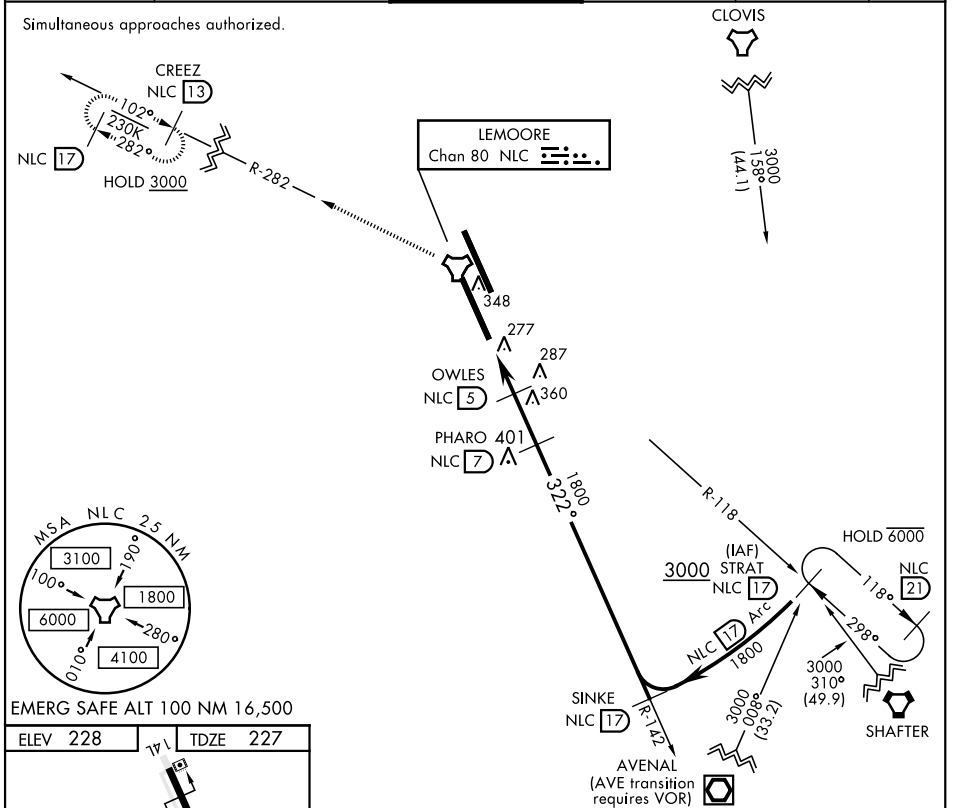
TACAN NLC Chan 80	APCH CRS 322°	Rwy Idg 13,501 TDZE 227 Arprt Elev 228
-----------------------------	-------------------------	---

AL-5067 [USN]

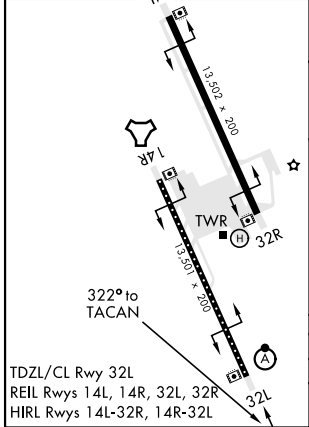
LEMOORE NAS (REEVES FIELD) (KNLC)

<p>⚠ *When ALS inop, increase CAT ABCD RVR to 55 and vis to 1 mile.</p>	<p>ALSF-2</p>	<p>MISSED APPROACH: Climb to 3000 via R-142 to NLC TACAN, then via R-282 to CREEZ and hold.</p>
---	---------------	---

<p>ATIS ★</p> <p>121.575 327.15</p>	<p>LEMOORE APP CON</p> <p>N124.1 S118.15 269.025</p>	<p>LEMOORE TOWER ★</p> <p>128.3 340.2</p>	<p>GND CON</p> <p>121.65 305.2</p>	<p>CLNC DEL</p> <p>124.1 371.9</p>	<p>ASR/PAR</p>
--	---	--	---	---	----------------



ELEV 228 | TDZE 227



3000 NLC R-142

NLC R-282

TACAN

SUZIQ 3.4

OWLES 5

PHARO 7

322°

1080

1800

1800

SINKE R-142 17

3000

STRAT R-118 17

3.37°

TCH 50

1.6 NM

2 NM

CATEGORY	A	B	C	D
S-32L *	580/24		353	(400-½)
Ⓞ CIRCLING	680-1 452 (500-1)		700-1½ 472 (500-1½)	780-2 552 (600-2)

TACAN Y RWY 32L