

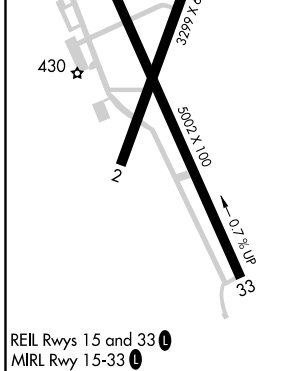
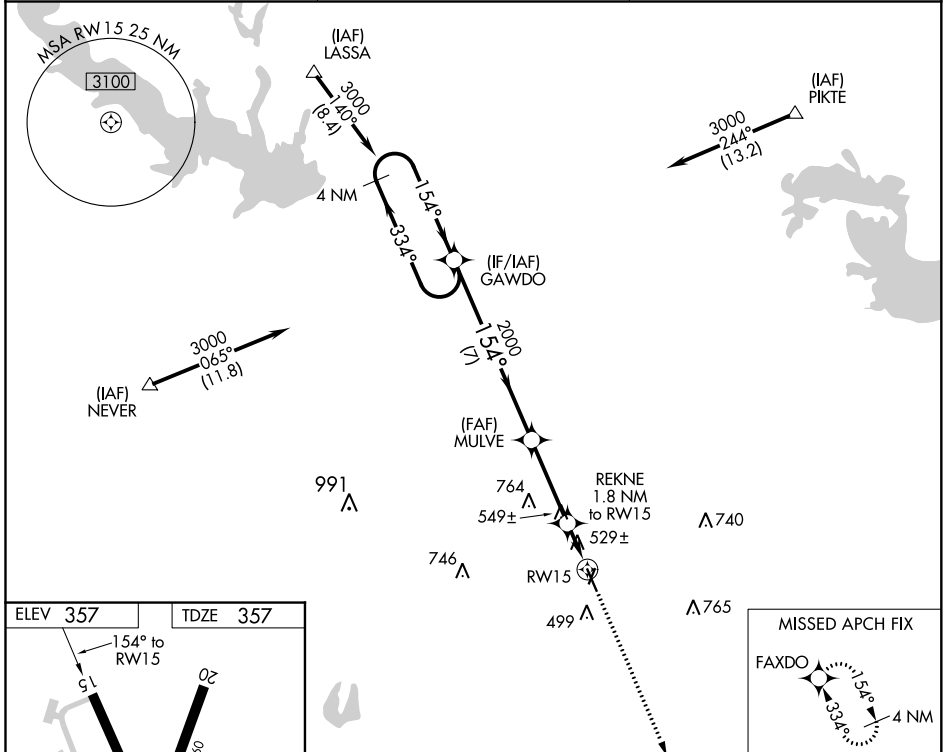
WAAS CH 90426 W15A	APP CRS 154°	Rwy Idg TDZE Apt Elev	5002 357 357
--	------------------------	-----------------------------	---

RNAV (GPS) RWY 15

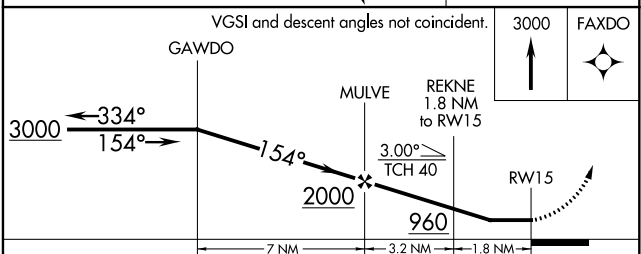
HARRISON COUNTY (ASL)

RNP APCH.	MISSED APPROACH: Climb to 3000 direct FAXDO and hold.
<p>▼ Rwy 15 helicopter visibility reduction below 1 SM NA.</p> <p>▲ NA When local altimeter setting not received, use Longview altimeter setting and increase all MDA 60 feet; increase LP Cat C visibility 1/8 mile. Procedure NA at night.</p>	

AWOS-3 118.675	SHREVEPORT APP CON 119.9 335.55	UNICOM 122.8 (CTAF) 0
--------------------------	---	---------------------------------



REIL Rwy 15 and 33
MIRL Rwy 15-33



CATEGORY	A	B	C	D
LP MDA	780-1	423 (500-1)	780-1 1/4 423 (500-1 1/4)	NA
LNAV MDA	800-1	443 (500-1)	800-1 3/8 443 (500-1 3/8)	NA

SC-2, 09 SEP 2021 to 07 OCT 2021

SC-2, 09 SEP 2021 to 07 OCT 2021