

WAAS CH 86926 W33A	APP CRS 334°	Rwy Idg TDZE Apt Elev	5002 349 357
----------------------------------------	------------------------	-----------------------------	-----------------------------------------

RNAV (GPS) RWY 33

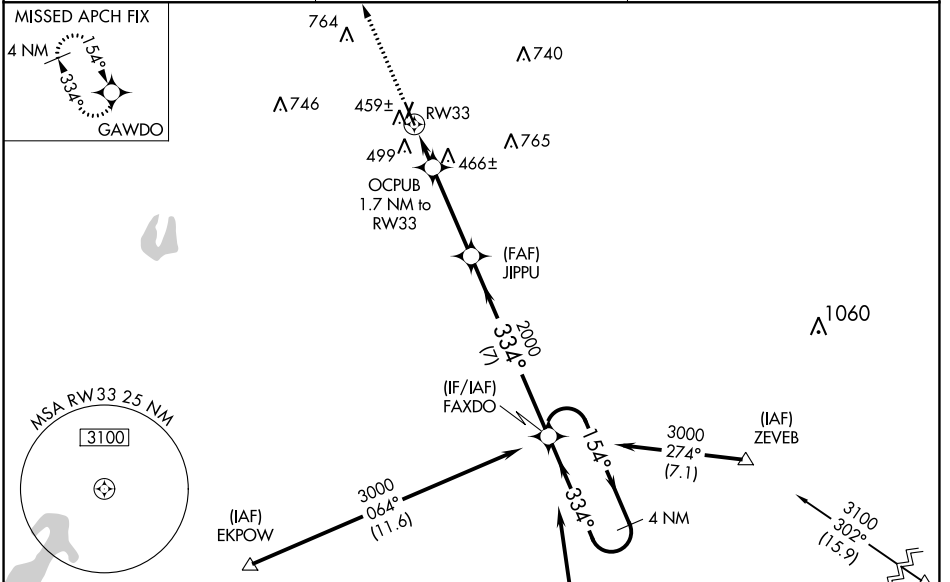
HARRISON COUNTY (ASL)

RNP APCH.

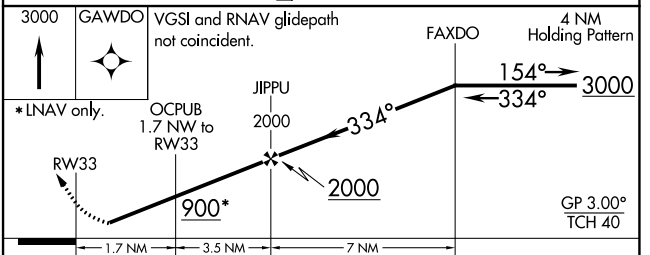
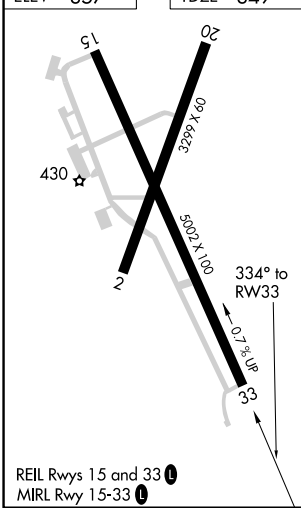
Baro-VNAV NA when using Longview altimeter setting. For uncompensated Baro-VNAV systems, LNAV/VNAV NA below -5°C (23°F) or above 40°C (104°F). Rwy 33 helicopter visibility reduction below 3/4 SM NA. When local altimeter setting not received, use Longview altimeter setting and increase all DA 52 feet and all MDA 60 feet; increase LPV all Cats visibility 1/8 mile, LNAV/VNAV all Cats and LNAV Cat C visibility 1/4 mile.

MISSED APPROACH:
Climb to 3000 direct GAWDO and hold.

AWOS-3 118.675	SHREVEPORT APP CON 119.9 335.55	UNICOM 122.8 (CTAF)
--------------------------	-------------------------------------------	-------------------------------



ELEV 357	TDZE 349
----------	----------



CATEGORY	A	B	C	D
LPV DA		635-1 286 (300-1)		NA
LNAV/VNAV DA		658-1 309 (300-1)		NA
LNAV MDA	720-1 371 (400-1)		720-1 371 (400-1 1/8)	NA

SC-2, 09 SEP 2021 to 07 OCT 2021

SC-2, 09 SEP 2021 to 07 OCT 2021